



ST. GEORGES GROVE, SW17

£375,000

- One double bedroom
- Open plan living
- Built in storage
- Private balcony
- Sought after development
- Energy rating: TBC



1



1



1



ABOUT THE HOME

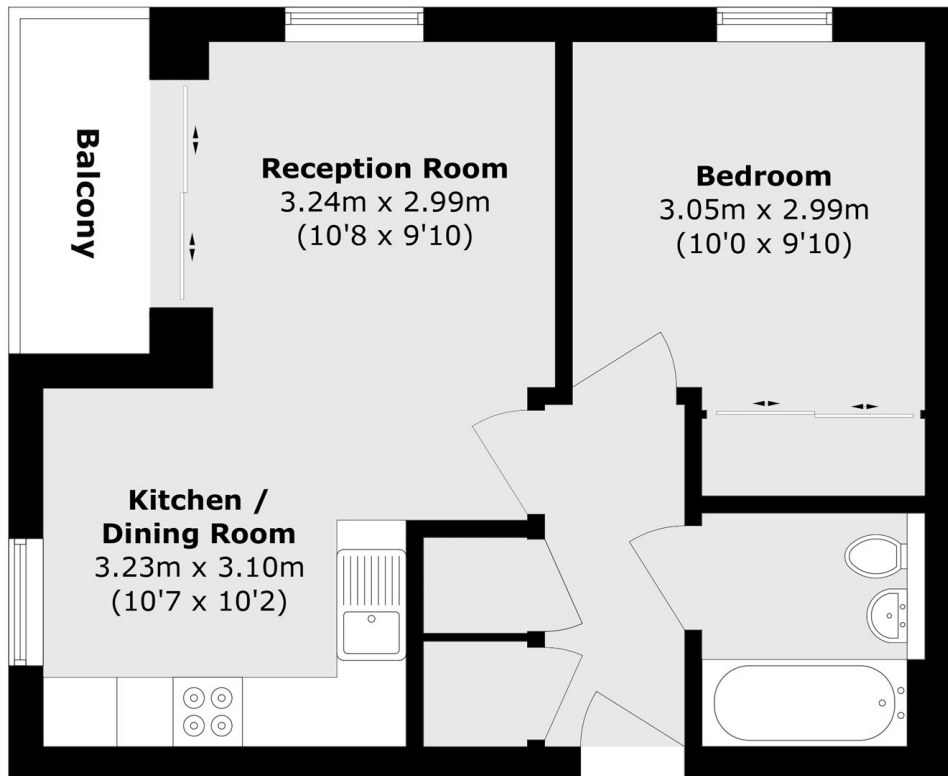
A well presented, one bedroom, modern apartment benefitting from allocated parking.

Accommodation comprises; entrance hall with secure telephone entry system and useful storage cupboards, modern spacious bathroom, generous bedroom with built-in wardrobes, open plan reception/kitchen and dining area with a balcony which floods the property with an abundance of light. The property also benefits from an allocated parking space and well maintained communal gardens.

Fitzgerald House is located in the highly sought after 'Quadrangle' development, offering easy access to either Earlsfield mainline railway, Tooting Broadway underground station or Wandsworth Common for direct trains into London Victoria.







Total area (approx.): 42.8 sq. m (460.6 sq. ft)

Balcony area (approx.): 3.3 sq. m (35.5 sq. ft)

JACKSONS EARLSFIELD

372-374 Garratt Lane,
Earlsfield, London, SW18 4ES
Sales: 020 8971 7979
Lettings: 020 8971 7070

Energy Rating: D We aim to make our particulars both accurate and reliable. However they are not guaranteed; nor do they form part of an offer or contract. If you require clarification on any points then please contact us, especially if you're traveling some distance to view. Please note that appliances and heating systems have not been tested and therefore no warranties can be given as to their good working order.