



FARLTON ROAD, SW18

£575,000

- Victorian ground floor flat
- One/two bedrooms
- Flexible accommodation
- Private garden
- Close to station
- Energy rating: C





ABOUT THE HOME

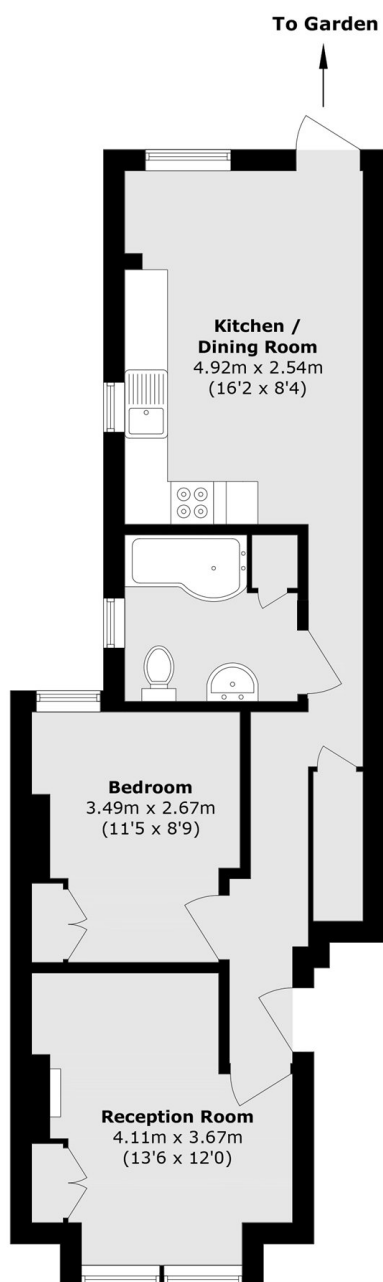
A wonderful example of a Victorian ground floor garden flat in a popular Earlsfield location.

To the front of the property you are met with a spacious reception room benefitting from an abundance of natural light from the bay windows, a second double bedroom with built in wardrobes as well as a modern bathroom suite. To the rear is an impressive open plan kitchen/dining room; offering an excellent entertaining space and direct access onto a low maintenance private garden. The property benefits from flexible accommodation where the front bedroom can also be utilised as a reception room.

Farlton Road is a much sought after road in Earlsfield, the property is well placed for some of the most desirable schools in the area and is 0.4 miles from Earlsfield mainline station. Garratt Lane with its vast array of trendy shops, bars and restaurants is within easy reach. The green open spaces of King George's Park are also close by.







Total area (approx.): 56.1 sq. m (603.8 sq. ft)

JACKSONS EARLSFIELD

372-374 Garratt Lane,
Earlsfield, London, SW18 4ES
Sales: 020 8971 7979
Lettings: 020 8971 7070

Energy Rating: C We aim to make our particulars both accurate and reliable. However they are not guaranteed; nor do they form part of an offer or contract. If you require clarification on any points then please contact us, especially if you're traveling some distance to view. Please note that appliances and heating systems have not been tested and therefore no warranties can be given as to their good working order.