



TRANMERE ROAD, SW18

£625,000

- Victorian Maisonette
- Three Bedrooms
- Share of Freehold
- Chain Free
- Sought After Location
- Energy rating: E



3



1



1



ABOUT THE HOME

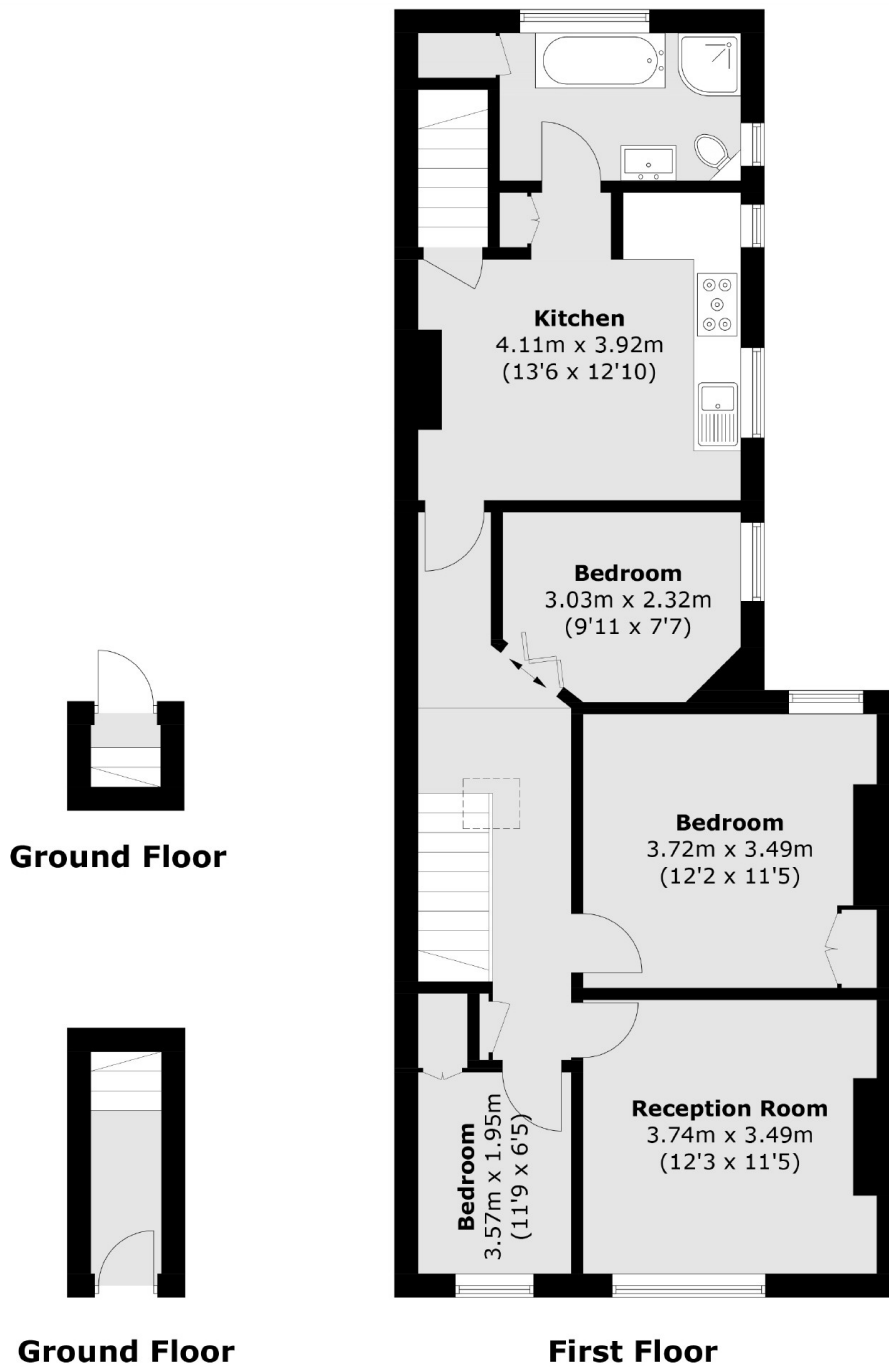
A fantastic three bedroom, first floor Edwardian maisonette with separate reception and kitchen/dining room and a large private garden.

This charming property is in great condition throughout and retains a wealth of period features. Accommodation comprises; wide entrance hall, useful storage cupboard, three well presented bedrooms, spacious and bright reception room with feature fireplace, modern bathroom and a generous kitchen/dining room with stairs leading to a large private garden. This property also benefits from a share of the freehold.

Tranmere Road is one of Earlsfield's most prestigious roads. The property is 0.4 miles from Earlsfield station and Garratt Lane's vast array of amenities are a stones throw away. It is also extremely well placed for some of the most desirable schools in the area.







Total area (approx.): 80.7 sq. m (868.6 sq. ft)

JACKSONS EARLSFIELD

372-374 Garratt Lane,
Earlsfield, London, SW18 4ES
Sales: 020 8971 7979
Lettings: 020 8971 7070

Energy Rating: E We aim to make our particulars both accurate and reliable. However they are not guaranteed; nor do they form part of an offer or contract. If you require clarification on any points then please contact us, especially if you're traveling some distance to view. Please note that appliances and heating systems have not been tested and therefore no warranties can be given as to their good working order.