



PELHAM ROAD, SW19

£1,850 PCM

- Two Double Bedrooms
- Close to Local Amenities
- Allocated Parking
- Separate Reception Room





## ABOUT THE HOME

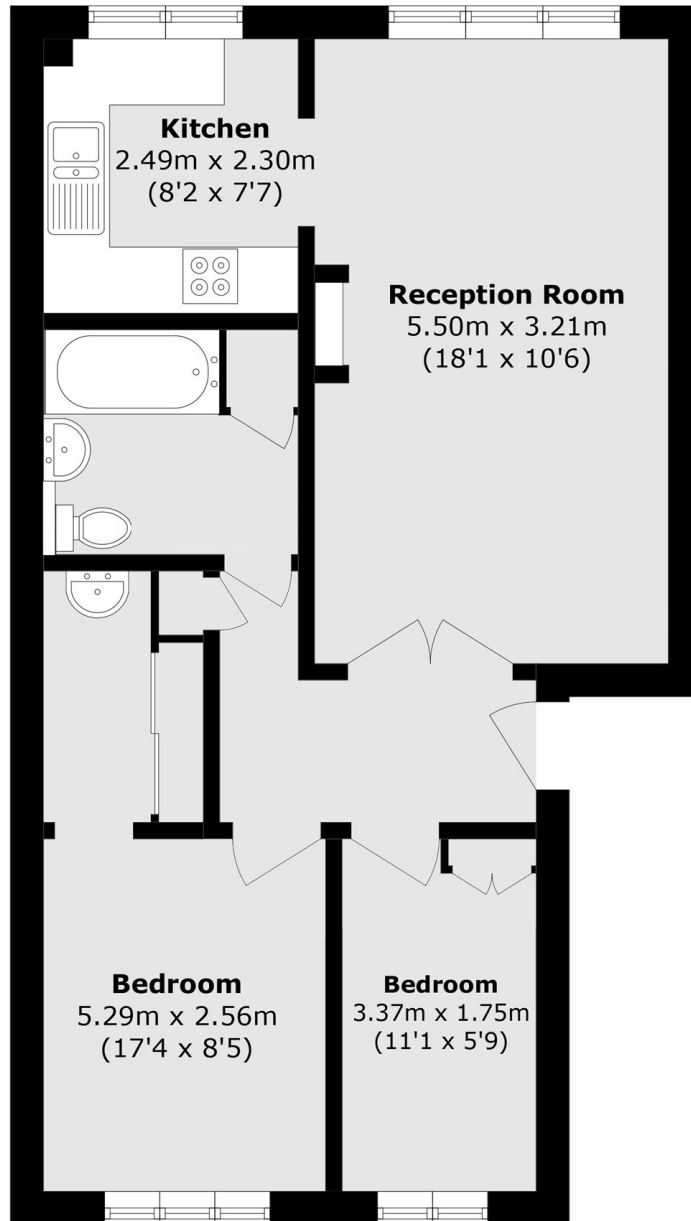
This property comprises of two bedrooms, spacious living room, modern kitchen and bathroom suite.

Pelham Road is located with close proximity to an abundance of local amenities, Wimbledon Central, tube station and mainland railway.









Total area (approx.): 53.5 sq. m (575.8 sq. ft)

#### JACKSONS EARLSFIELD

372-374 Garratt Lane,  
Earlsfield, London, SW18 4ES  
Sales: 020 8971 7979  
Lettings: 020 8971 7070

Energy Rating: We aim to make our particulars both accurate and reliable. However they are not guaranteed; nor do they form part of an offer or contract. If you require clarification on any points then please contact us, especially if you're traveling some distance to view. Please note that appliances and heating systems have not been tested and therefore no warranties can be given as to their good working order.