



ST. GEORGES GROVE, SW17

£1,650 PCM

- Modern Apartment
- Open Plan Living Space
- One Double Bedroom
- Private Balcony
- On Site Shopping Facilities
- Furnished



1



1



1



ABOUT THE HOME

A one double bedroom modern apartment with private balcony located within the ever popular St Georges Grove development. Available 21st May 2024

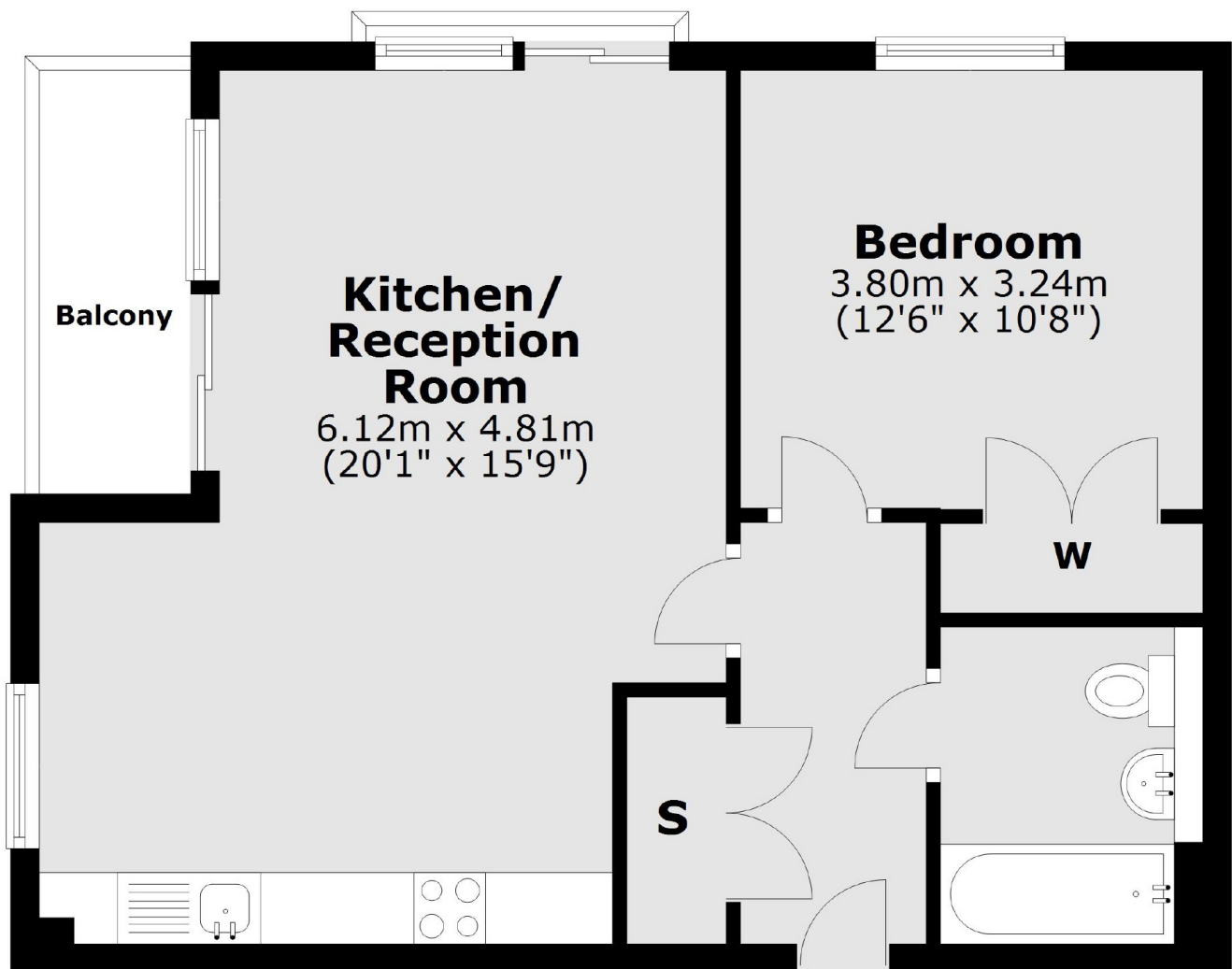
Including an open plan living space with stylish modern fitted kitchen, one double bedroom with built in wardrobes, a modern bathroom suite and private balcony.

Located in the ever popular St Georges Development which benefits from on site shopping facilities, communal gardens and direct bus links into Clapham junction.





First Floor



Main area: Approx. 46.0 sq. metres (495.2 sq. feet)
Plus balconies, approx. 3.6 sq. metres (38.3 sq. feet)

JACKSONS EARLSFIELD

372-374 Garratt Lane,
Earlsfield, London, SW18 4ES
Sales: 020 8971 7979
Lettings: 020 8971 7070

Energy Rating: We aim to make our particulars both accurate and reliable. However they are not guaranteed; nor do they form part of an offer or contract. If you require clarification on any points then please contact us, especially if you're traveling some distance to view. Please note that appliances and heating systems have not been tested and therefore no warranties can be given as to their good working order.