



BERNARD GARDENS, SW19

£2,600 PCM

- Two Double Bedrooms
- Raised Ground Floor Flat
- Close to Local Amenities
- High Ceilings
- Spacious Throughout
- Separate Living Area



2



1



1



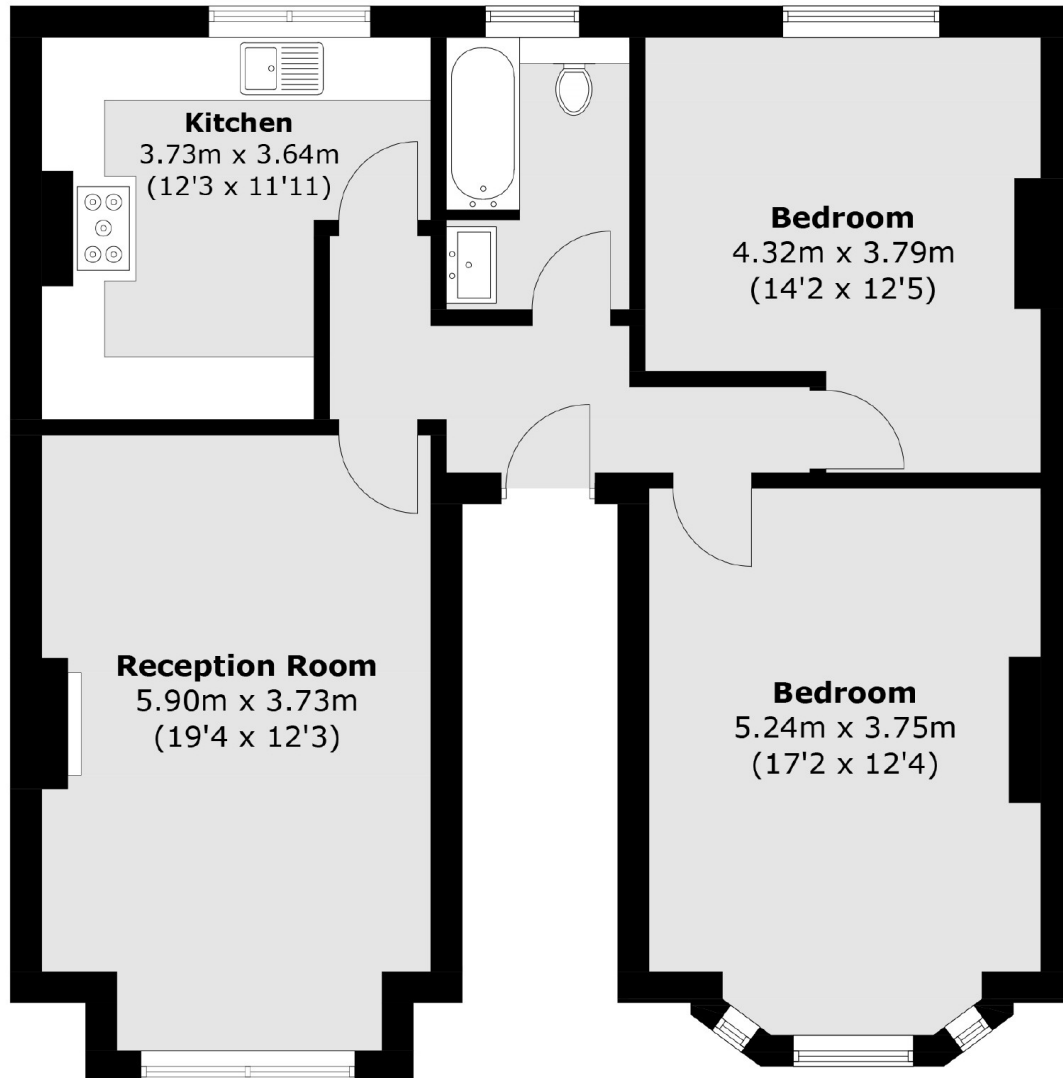
ABOUT THE HOME

A spacious two bedroom raised ground floor flat with modern interior throughout benefiting from high ceilings and close to Wimbledon Station.

Bernard Gardens is a desirable residential street excellently positioned near Wimbledon Park. The area benefits from easy access to the District Line and is just a short distance from Wimbledon Village.







Upper Ground Floor

Total area (approx.): 79.1 sq. m (851.4 sq. ft)

JACKSONS EARLSFIELD

372-374 Garratt Lane,
Earlsfield, London, SW18 4ES
Sales: 020 8971 7979
Lettings: 020 8971 7070

Energy Rating: We aim to make our particulars both accurate and reliable. However they are not guaranteed; nor do they form part of an offer or contract. If you require clarification on any points then please contact us, especially if you're traveling some distance to view. Please note that appliances and heating systems have not been tested and therefore no warranties can be given as to their good working order.