



LITTLETON STREET, SW18

£4,250 PCM

- Newly Decorated
- New Flooring Throughout
- Four Double Bedrooms
- One Single Bedroom
- Two Bathrooms
- Private Rear Garden



5



2



2



ABOUT THE HOME

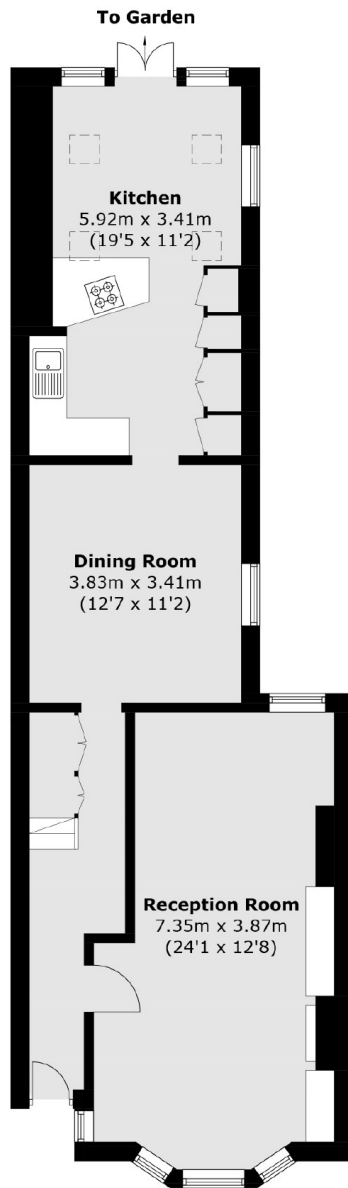
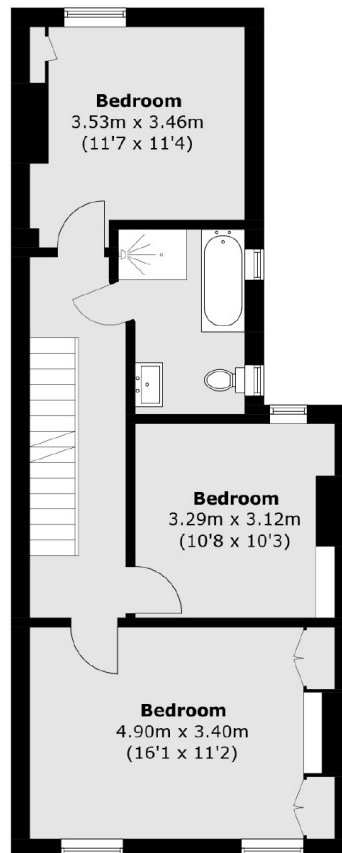
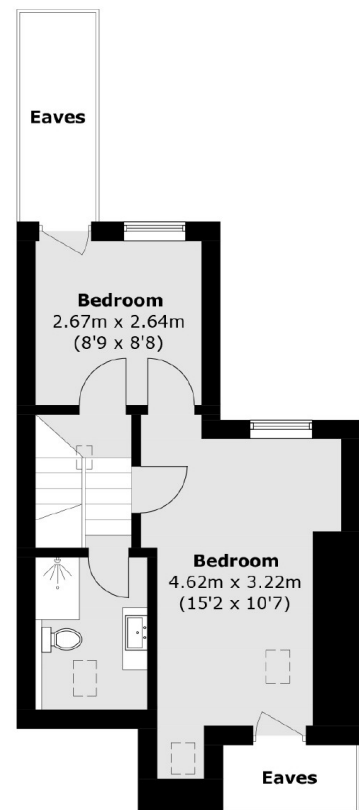
A newly decorated three storey five bedroom Victorian terraced house with private rear garden.

The property will be repainted with new flooring throughout. Includes double glazed windows, period feature's, a kitchen/breakfast room with separate dining area, four double bedrooms, a further single bedroom and two modern bathroom suites.

Ideally located within 5 minutes of Earlsfield Station as well as the local amenities of Garratt Lane. The property would be ideal for a family or professional sharers.






Ground Floor

First Floor

Second Floor

Total area (approx.): 153.2 sq. m (1649.0 sq. ft)
(Excluding Eaves)

JACKSONS EARLSFIELD

372-374 Garratt Lane,
Earlsfield, London, SW18 4ES
Sales: 020 8971 7979
Lettings: 020 8971 7070

Energy Rating: E We aim to make our particulars both accurate and reliable. However they are not guaranteed; nor do they form part of an offer or contract. If you require clarification on any points then please contact us, especially if you're traveling some distance to view. Please note that appliances and heating systems have not been tested and therefore no warranties can be given as to their good working order.