

CARGILL ROAD, SW18

£1,850 PCM

- Two Bedrooms
- Reception Room
- Maisonette
- Modern Fitted Kitchen



2



1



1





## ABOUT THE HOME

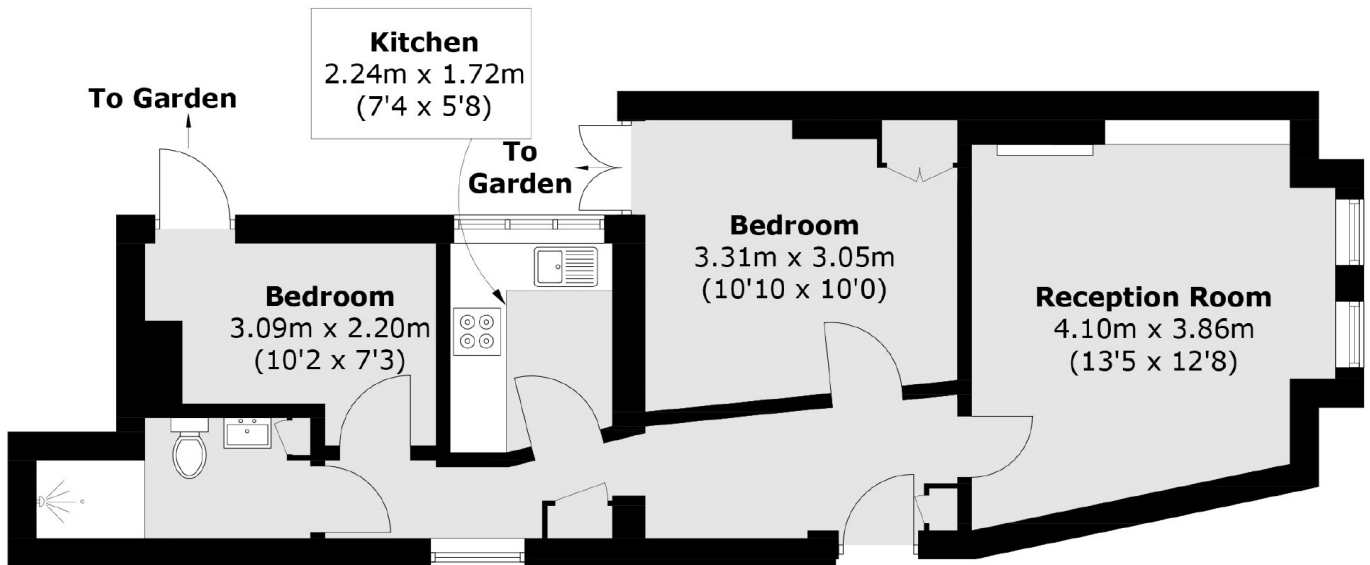
Two bedroom ground floor maisonette benefits from a spacious reception room with feature fireplace and original wooden flooring, a modern fitted kitchen with integrated appliances, a modern bathroom suite and a private rear garden.

Located on the popular Cargill Road, within close proximity to Earlsfield Station as well the local amenities of Garratt Lane.









### Ground Floor

Total area (approx.): 47.7 sq. m (513.4 sq. ft)

#### JACKSONS EARLSFIELD

372-374 Garratt Lane,  
Earlsfield, London, SW18 4ES  
Sales: 020 8971 7979  
Lettings: 020 8971 7070

Energy Rating: E We aim to make our particulars both accurate and reliable. However they are not guaranteed; nor do they form part of an offer or contract. If you require clarification on any points then please contact us, especially if you're traveling some distance to view. Please note that appliances and heating systems have not been tested and therefore no warranties can be given as to their good working order.