



FRANCHE COURT ROAD, SW17

£3,500 PCM

- First Floor Maisonette
- Open Plan Living Space
- Three Bedrooms
- Two Bathrooms





## ABOUT THE HOME

An exceptional three bedroom duplex apartment with a large terrace and its own front door.

This very unique property is in immaculate condition throughout, with modern fixtures and fittings, whilst retaining a wealth of period features including high ceilings. Accommodation comprises; good-sized reception room open to the dining area and leading to the modern kitchen; all of which offers a fantastic entertaining space. There is a well presented family bathroom, and two generous bedrooms on the first floor also. Stairs lead from the second floor, which incorporates an impressive main bedroom with en suite bathroom and access onto the wonderful roof terrace.

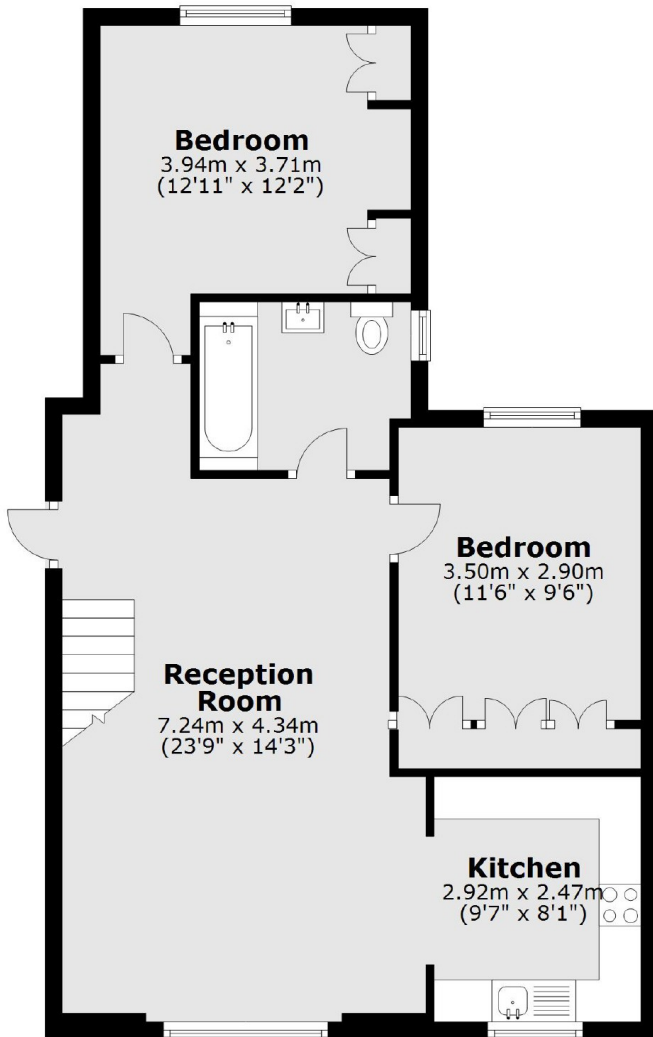
The property is situated on a sought after residential road offering easy access to Earlsfield mainline station (0.6 mile), Tooting Broadway underground station (1 mile) and Garratt Lane's array of amenities, restaurants and bars. The green open spaces of Wandsworth Common are also close by.



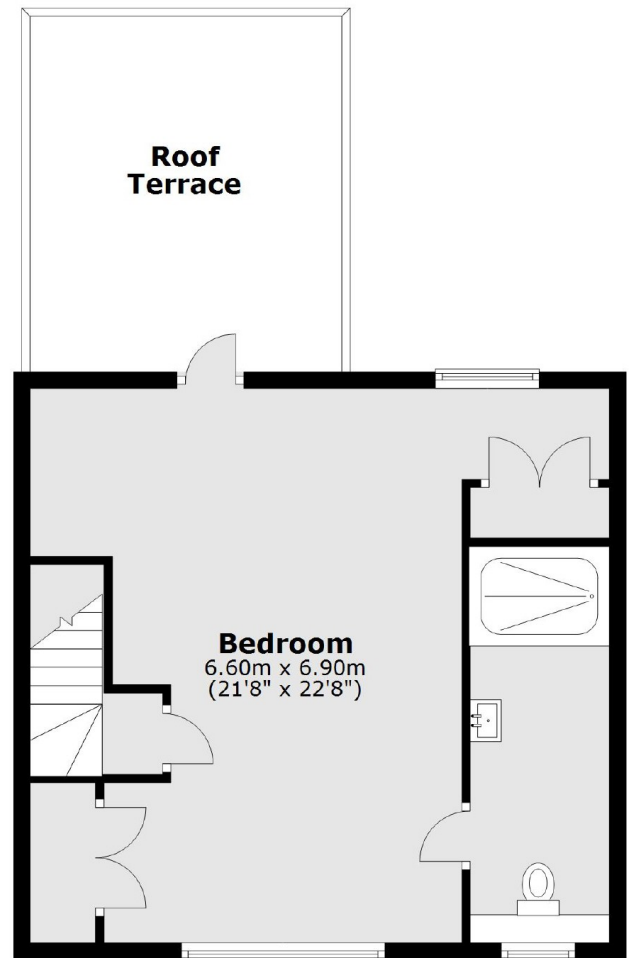




### First Floor



### Second Floor



**Main area: Approx. 111.9 sq. metres (1204.9 sq. feet)**

Plus roof terrace, approx. 16.1 sq. metres (173.3 sq. feet)

#### JACKSONS EARLSFIELD

372-374 Garratt Lane,  
Earlsfield, London, SW18 4ES  
Sales: 020 8971 7979  
Lettings: 020 8971 7070

Energy Rating: We aim to make our particulars both accurate and reliable. However they are not guaranteed; nor do they form part of an offer or contract. If you require clarification on any points then please contact us, especially if you're traveling some distance to view. Please note that appliances and heating systems have not been tested and therefore no warranties can be given as to their good working order.