



HARDWICKS SQUARE, SW18

£475,000

- Private balcony
- Allocated parking
- Modern development
- Open plan living
- Central location
- Energy rating: B



2



2



1



## ABOUT THE HOME

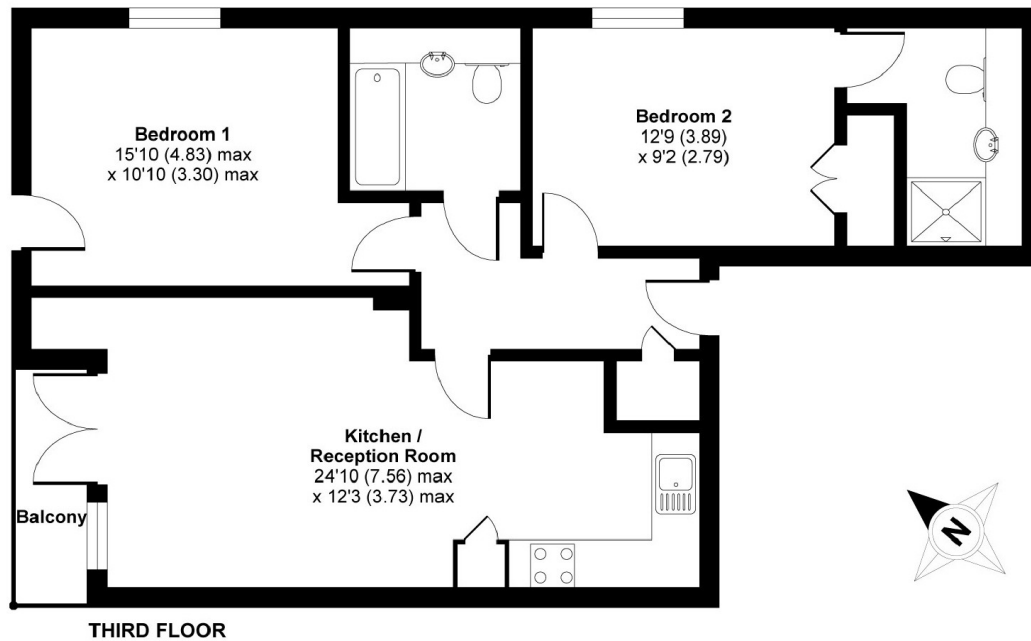
A spacious two double bedroom, two bathroom apartment located in the popular Hardwicks Square. The property benefits from an open plan kitchen / living room, two generous double bedrooms and two bathrooms, one of which is an en-suite. The property also benefits from ample built in storage and allocated parking.

Hardwicks Square is 0.2 miles away from King Georges Park and 0.1 miles away from Southside Shopping Centre with amenities such as a Multiplex Cinema, large Waitrose and a host of high street shops.









APPROX. GROSS INTERNAL FLOOR AREA 750 SQ FT 69.6 SQ METRES

**Hardwicks Square, London, SW18**

Copyright nichecom.co.uk 2017 Produced for Jacksons the Independent Estate Agents REF : 224914

### JACKSONS EARLSFIELD

372-374 Garratt Lane,  
Earlsfield, London, SW18 4ES  
Sales: 020 8971 7979  
Lettings: 020 8971 7070

Energy Rating: B We aim to make our particulars both accurate and reliable. However they are not guaranteed; nor do they form part of an offer or contract. If you require clarification on any points then please contact us, especially if you're traveling some distance to view. Please note that appliances and heating systems have not been tested and therefore no warranties can be given as to their good working order.