



SMITHWOOD CLOSE, SW19

£2,555 PCM

- Three Double bedroom
- Purpose build block
- Separate Kitchen
- Reception room
- Balcony
- Energy rating:D





## ABOUT THE HOME

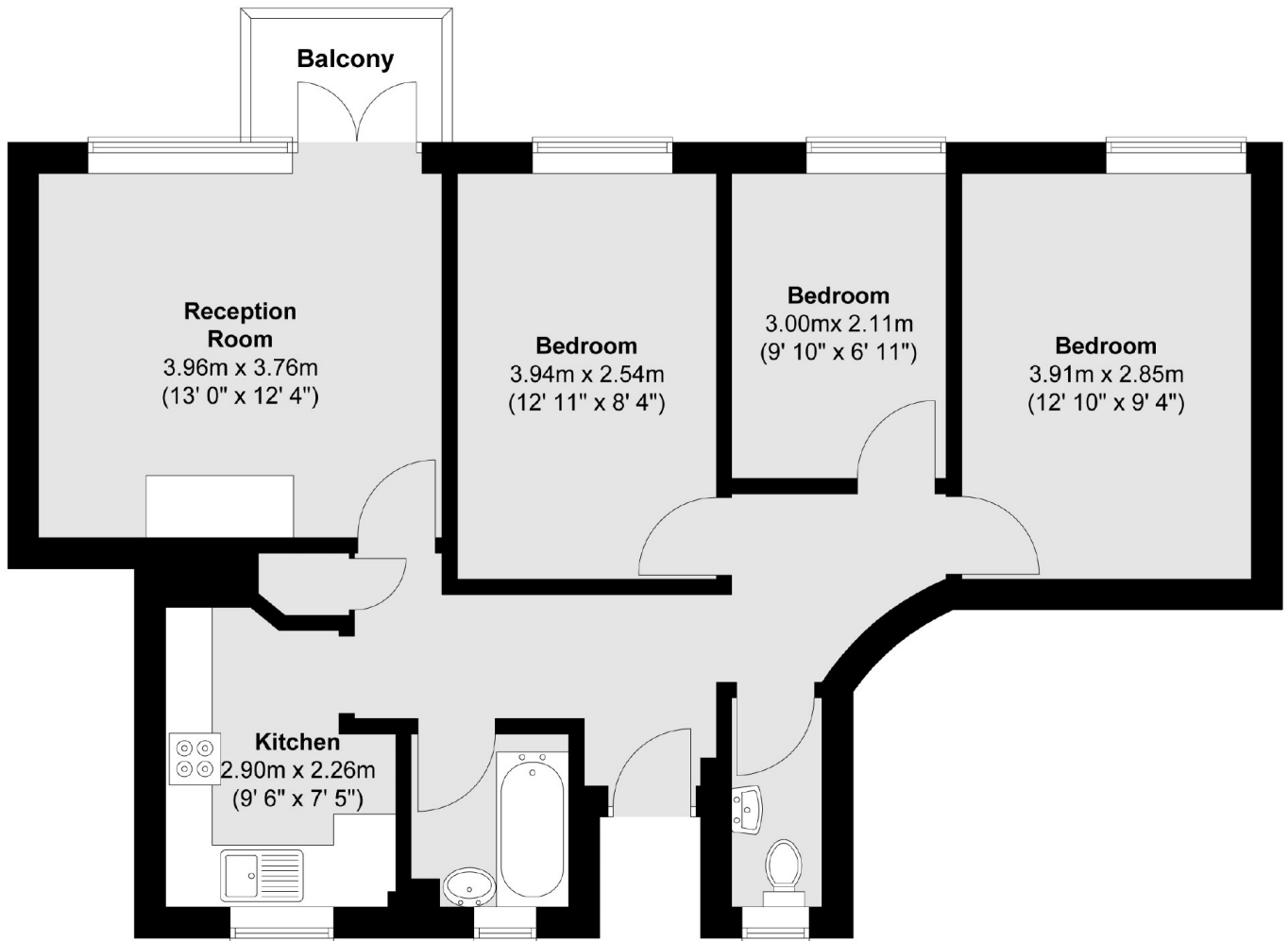
Three Double bedrooms purpose built flat in Smithwood Close, SW19. The accommodation features spacious lounge, fitted kitchen, modern bathroom and three good sized bedrooms.

Smithwood Close provides excellent access to Southfields, Putney and Wimbledon with various travel options available including underground, train services, and regular bus services. The green spaces of Wimbledon Common are also close by along with excellent local amenities and shopping facilities.









Total area (approx.) : 66.8 sq. m (719 sq. ft)  
Total balcony area (approx.) : 2.3 sq. m (25 sq. ft)

#### JACKSONS EARLSFIELD

372-374 Garratt Lane,  
Earlsfield, London, SW18 4ES  
Sales: 020 8971 7979  
Lettings: 020 8971 7070

Energy Rating: We aim to make our particulars both accurate and reliable. However they are not guaranteed; nor do they form part of an offer or contract. If you require clarification on any points then please contact us, especially if you're traveling some distance to view. Please note that appliances and heating systems have not been tested and therefore no warranties can be given as to their good working order.