



BOSCOMBE ROAD, SW19

£2,700 PCM

- First Floor Period Conversion
- Split Level
- Modern
- Three Double Bedrooms Excellent location





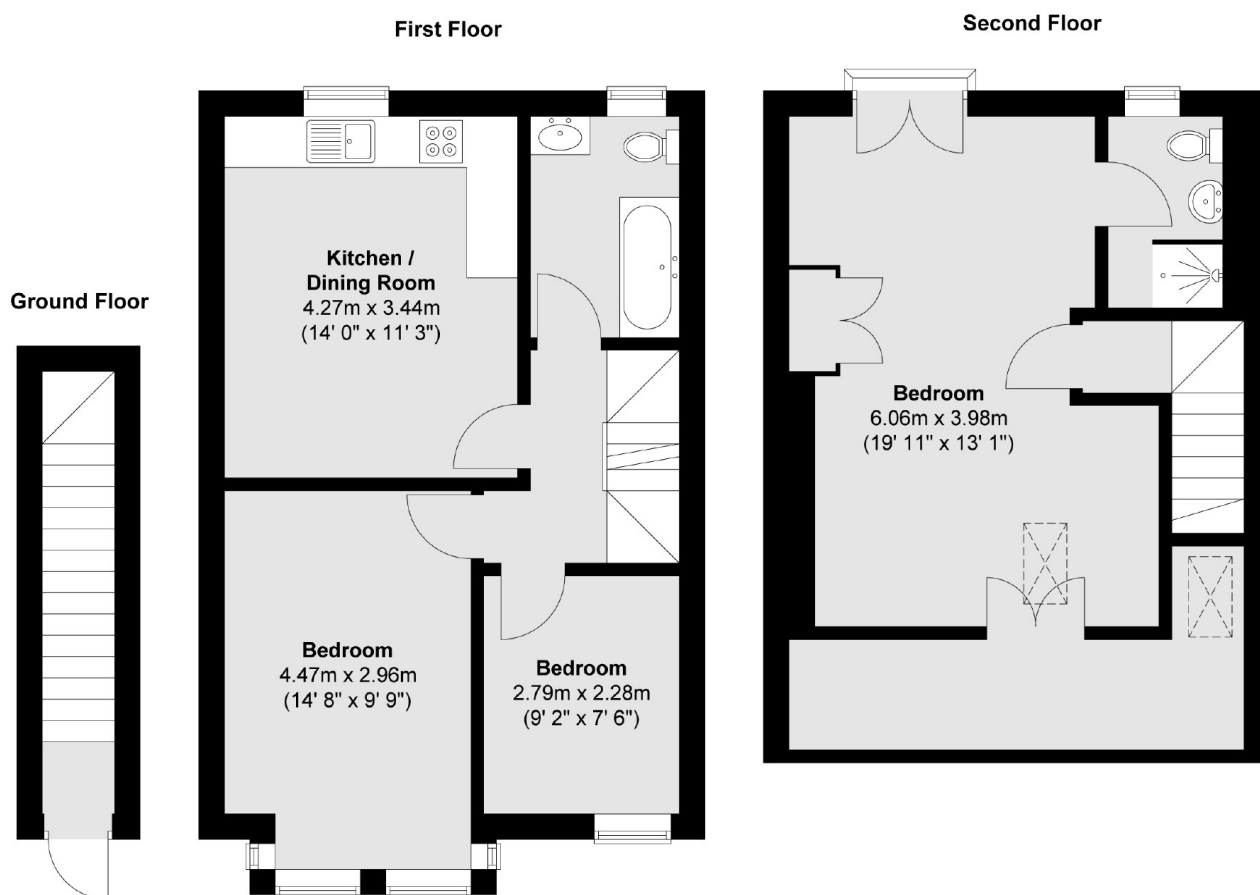


## ABOUT THE HOME

A recently refurbished three double bedroom split level conversion with two bathrooms and an open plan kitchen and reception room.







Total area (approx.) : 90.1 sq. m (970 sq. ft)  
Total balcony area (approx.) : 0.2 sq. m (2 sq. ft)

#### **JACKSONS EARLSFIELD**

372-374 Garratt Lane,  
Earlsfield, London, SW18 4ES  
Sales: 020 8971 7979  
Lettings: 020 8971 7070

Energy Rating: We aim to make our particulars both accurate and reliable. However they are not guaranteed; nor do they form part of an offer or contract. If you require clarification on any points then please contact us, especially if you're traveling some distance to view. Please note that appliances and heating systems have not been tested and therefore no warranties can be given as to their good working order.