



## HOPWOOD CLOSE, SW17

£2,000 PCM

- Newly Decorated
- First Floor Apartment
- Open Plan Living Space
- Two Double Bedrooms
- Allocated Parking
- Unfurnished or Furnished



2



1



1





## ABOUT THE HOME

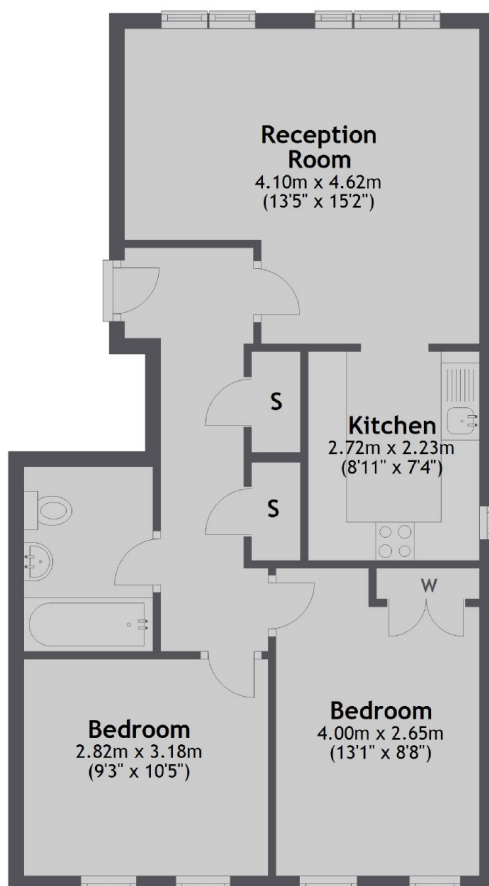
A newly decorated two double bedroom modern apartment with allocated parking.

Located on the first floor the property comprises a L shape reception room with space for dining, modern fitted kitchen, two double bedrooms, modern bathroom suite and ample storage throughout.

Located in the popular Peartree development within close proximity to Earlsfield BR Station and the open spaces of Garratt Green.





**First Floor**

Total area: approx. 57.0 sq. metres (613.8 sq. feet)

**JACKSONS EARLSFIELD**

372-374 Garratt Lane,  
Earlsfield, London, SW18 4ES  
Sales: 020 8971 7979  
Lettings: 020 8971 7070

Energy Rating: D We aim to make our particulars both accurate and reliable. However they are not guaranteed; nor do they form part of an offer or contract. If you require clarification on any points then please contact us, especially if you're traveling some distance to view. Please note that appliances and heating systems have not been tested and therefore no warranties can be given as to their good working order.