



LITTLETON STREET, SW18

£4,500 PCM

- Terraced House
- Kitchen/Breakfast Room
- Four Double Bedrooms
- Two Bathrooms
- Private Garden
- Energy rating: D



4



2



1



## ABOUT THE HOME

Split over three floors is this four double bedroom mid-terrace period house with private rear garden. Including a through reception room with bay window, wood flooring and feature fireplace. A kitchen/breakfast room with large dinning area and doors leading out to a private rear garden. Four Spacious double bedrooms, an impressive walk in wadrobe, two bathrooms and a downstairs w.c.

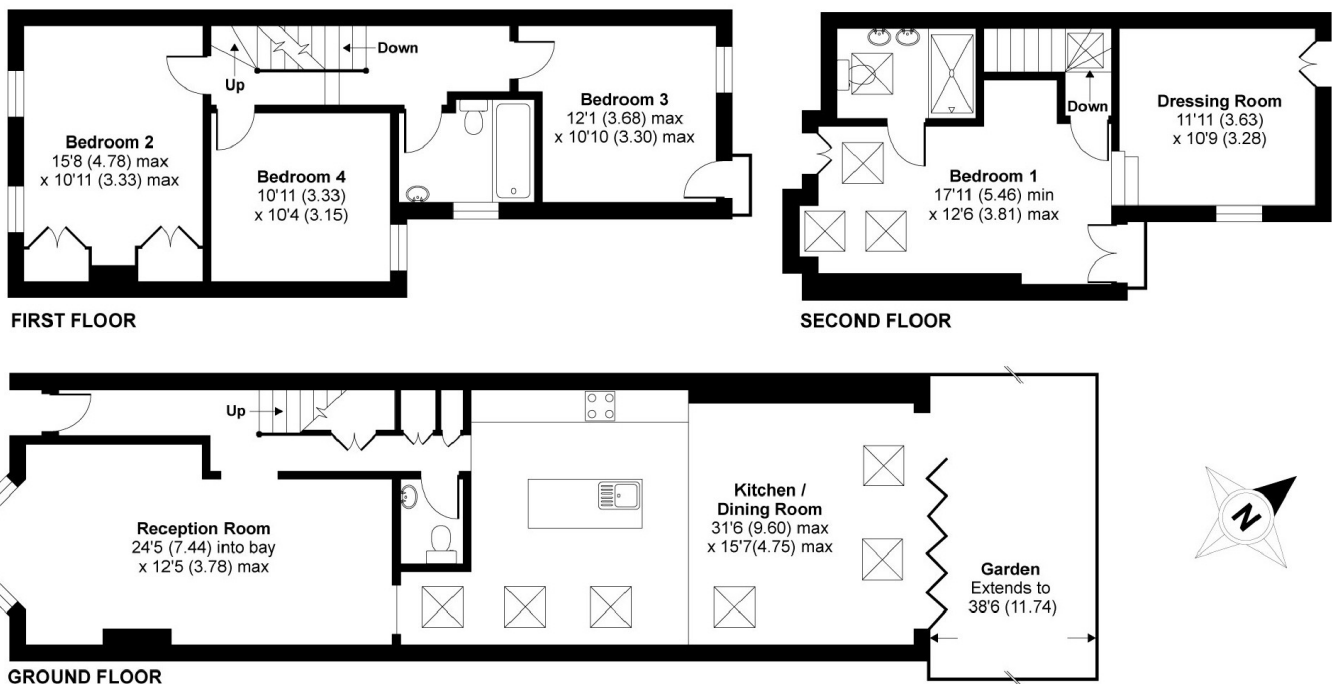


Located on the ever popular Littleton Street within close proximity to Earlsfield Station.









### JACKSONS EARLSFIELD

372-374 Garratt Lane,  
Earlsfield, London, SW18 4ES  
Sales: 020 8971 7979  
Lettings: 020 8971 7070

Energy Rating: E We aim to make our particulars both accurate and reliable. However they are not guaranteed; nor do they form part of an offer or contract. If you require clarification on any points then please contact us, especially if you're traveling some distance to view. Please note that appliances and heating systems have not been tested and therefore no warranties can be given as to their good working order.