



QUINTON STREET, SW18

£2,850 PCM

- Ground Floor Maisonette
- Two Double Bedrooms
- Reception Room
- Private Rear Garden



2



1



1



ABOUT THE HOME

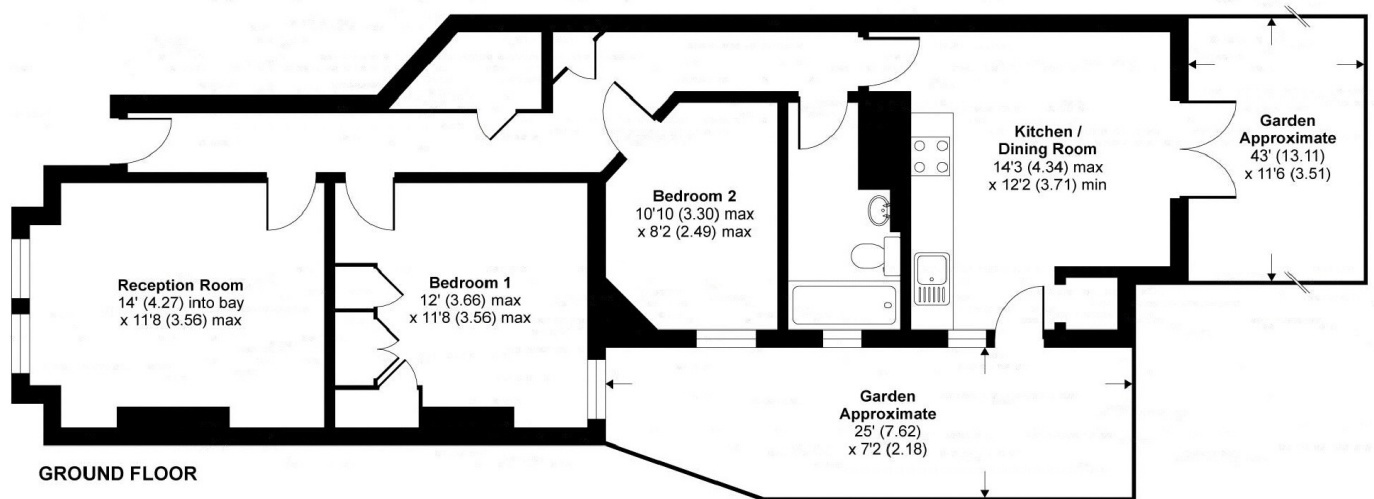
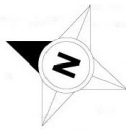
Two double bedroom ground floor maisonette with private rear garden located on the highly desirable Quinton Street.

Comprising a spacious reception room with feature fireplace, two double bedrooms, a modern bathroom suite, a spacious kitchen/breakfast room ideal for entertaining with doors leading to a well kept rear garden.

Located on one of Earlsfield's premier roads within close proximity to Earlsfield Station as well as the local amenities of Garratt Lane. The property would be ideal for a professional couple or small family.







APPROX GROSS INTERNAL FLOOR AREA 809 SQ FT 75.1 SQ METRES

Quinton Street, London, SW18

Copyright: nicholson.co.uk 2017 Produced for Jacksons the Independent Estate Agents REF: 221444

JACKSONS EARLSFIELD

372-374 Garratt Lane,
Earlsfield, London, SW18 4ES
Sales: 020 8971 7979
Lettings: 020 8971 7070

Energy Rating: We aim to make our particulars both accurate and reliable. However they are not guaranteed; nor do they form part of an offer or contract. If you require clarification on any points then please contact us, especially if you're traveling some distance to view. Please note that appliances and heating systems have not been tested and therefore no warranties can be given as to their good working order.