



EARLSFIELD ROAD, SW18

£575,000

- Split level Victorian apartment
- Two double bedrooms
- Share of freehold
- Private parking
- Sought after location
- Energy rating: D





## ABOUT THE HOME

A charming, two double bedroom, Victorian apartment just a stones throw from Wandsworth Common.

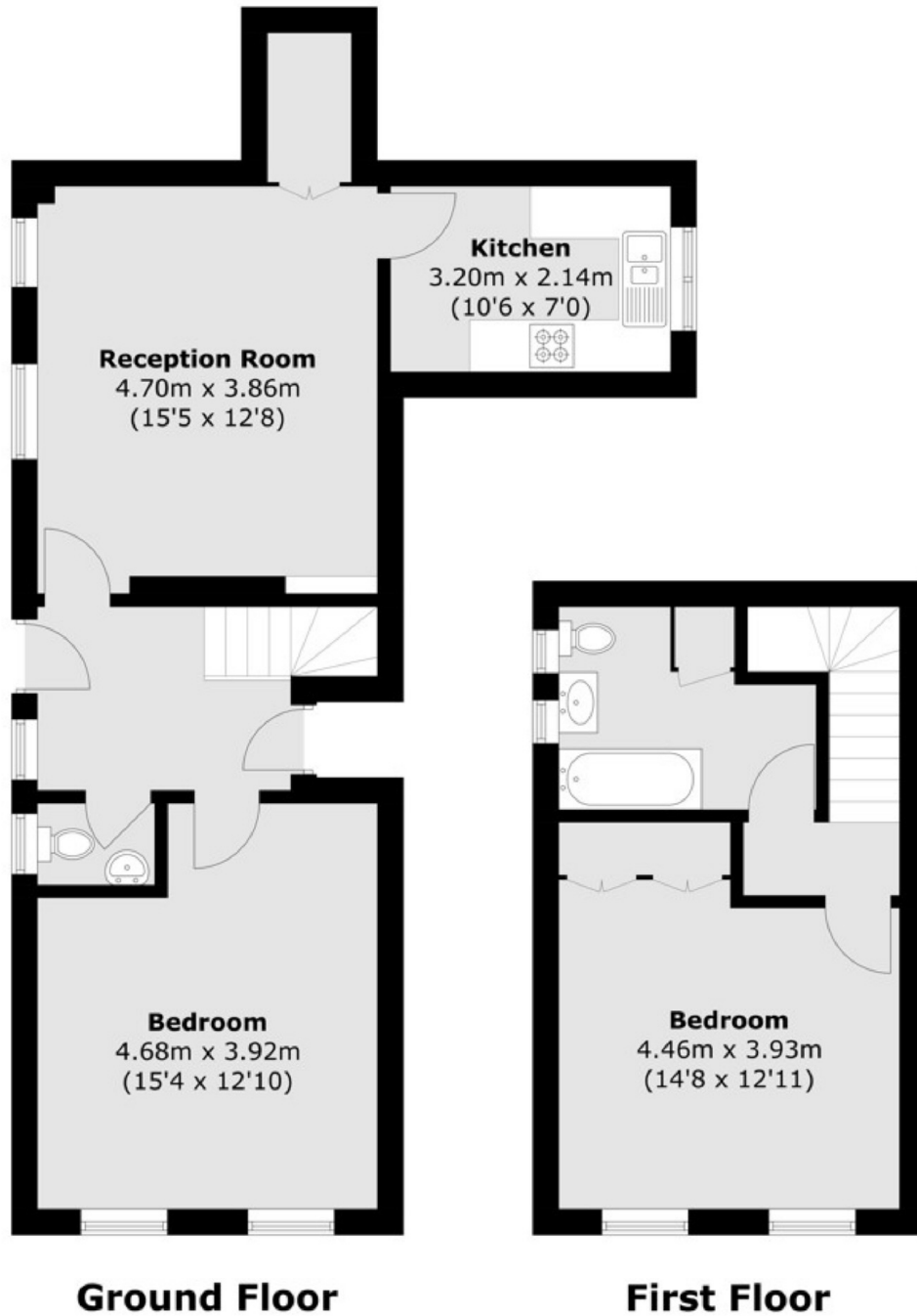
This well presented, split level property offers an amazing 875 sqft of living space. Entered via it's own front door you are met with a generous entrance hall, ground floor W/C, spacious reception room to the front boasting an abundance of natural light, useful storage cupboard and a separate kitchen, there is also a large double bedroom on the ground floor. Stairs lead to the second floor where you'll find a modern family bathroom and a principle bedroom with built in wardrobes. The property further benefits from a share of the freehold, private parking and direct access onto well kept gardens.

Earlsfield Road is extremely sought after, being equidistant of Earlsfield, Wandsworth Common and Clapham Junction mainline railway stations. The property is in catchment for some of the most desirable schools in the area and an array of trendy coffee shops, bars and restaurants as well as the green open spaces of Wandsworth Common are on your doorstep for a vibrant lifestyle.









Total area (approx.): 81.3 sq. m (875.0 sq. ft)

#### JACKSONS EARLSFIELD

372-374 Garratt Lane,  
Earlsfield, London, SW18 4ES  
Sales: 020 8971 7979  
Lettings: 020 8971 7070

Energy Rating: D We aim to make our particulars both accurate and reliable. However they are not guaranteed; nor do they form part of an offer or contract. If you require clarification on any points then please contact us, especially if you're traveling some distance to view. Please note that appliances and heating systems have not been tested and therefore no warranties can be given as to their good working order.