



EARLSFIELD ROAD, SW18

£700,000

- Three bedrooms
- Share of freehold
- Large private roof terrace
- Highly sought after location
- No onward chain
- Energy rating: D





ABOUT THE HOME

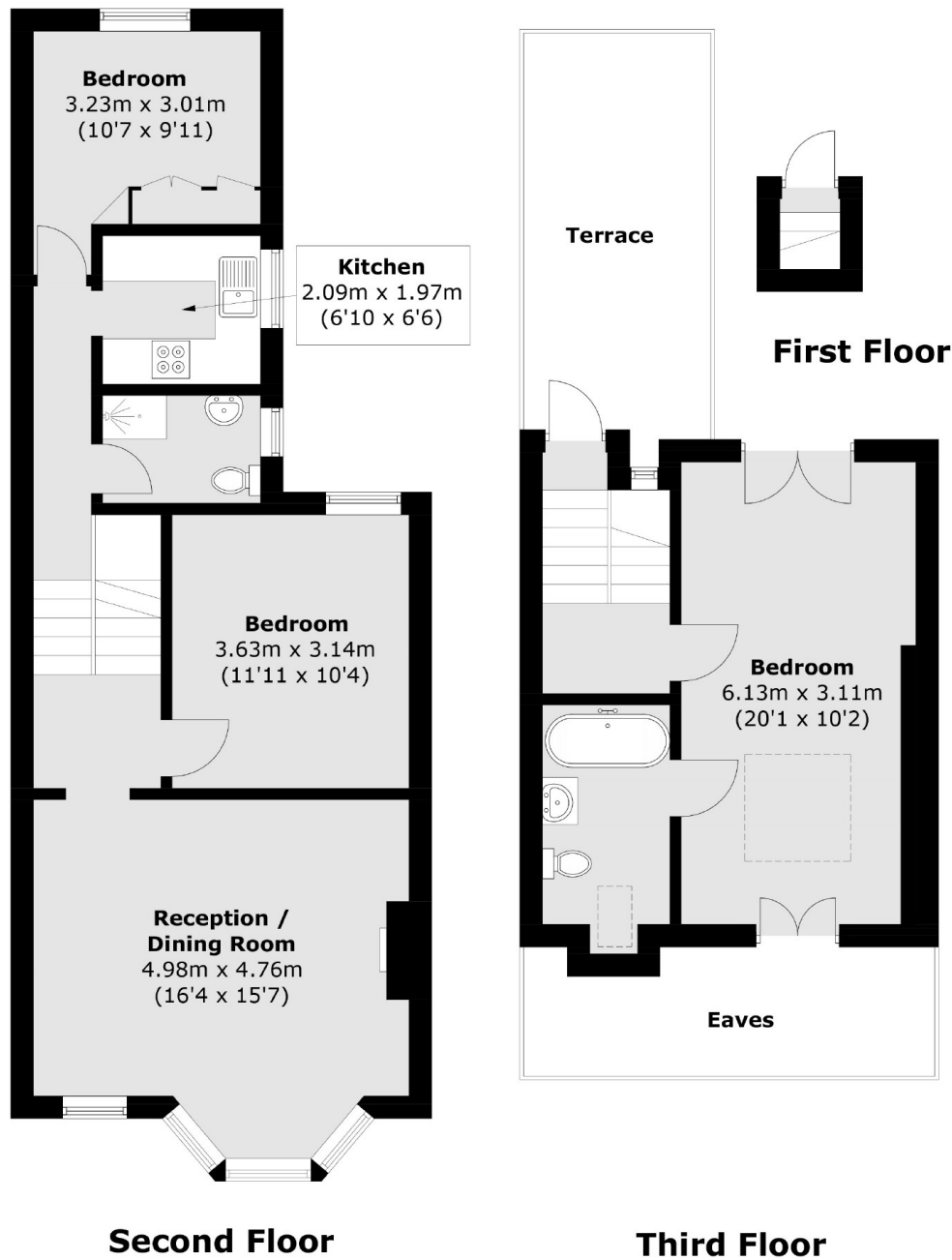
A three bedroom, split level Victorian conversion flat presented to the market in excellent condition and boasting a large private roof terrace.

A bright and spacious lounge, two generous double bedrooms, a modern kitchen and family bathroom make up the first floor. Stairs lead to the second floor comprising; a well proportioned principle bedroom with a large en-suite bathroom and an exceptionally sized private roof terrace. The property also benefits from a share of the freehold.

Earlsfield Road is one of Earlsfield's highly sought after residential roads of similar Victorian buildings. This location is very well served by excellent transport links, restaurants, bars, leisure and shopping facilities all within close proximity. The property is within 0.5 miles of Earlsfield Mainline Station with fast connections to Central London.







Total area (approx.): 90.8 sq. m (977.3 sq. ft)
 Balcony: 13.3 sq. m (143.2 sq. ft)
 (Excluding Eaves)

JACKSONS EARLSFIELD

372-374 Garratt Lane,
 Earlsfield, London, SW18 4ES
 Sales: 020 8971 7979
 Lettings: 020 8971 7070

Energy Rating: D We aim to make our particulars both accurate and reliable. However they are not guaranteed; nor do they form part of an offer or contract. If you require clarification on any points then please contact us, especially if you're traveling some distance to view. Please note that appliances and heating systems have not been tested and therefore no warranties can be given as to their good working order.