



KEBLE STREET, SW17

£1,000,000

- Victorian mid terrace home
- Three double bedrooms
- Home office
- Large private garden
- Excellent condition
- Energy rating: D







## ABOUT THE HOME

A Victorian, mid terrace house with impressive open plan kitchen, dining and reception room and a large, secluded garden with a home office.

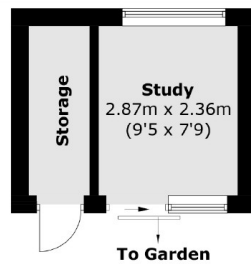
Accommodation comprises; an entrance hall with useful guest cloakroom and storage cupboard, bright reception room, generous and beautifully presented modern kitchen open plan to a dining and second reception area. This room is a true centrepiece and offers stylish parquet flooring with underfloor heating and bi-fold doors that lead onto a large garden with a useful home office. On the first floor there are two well-proportioned bedrooms and a luxurious main bathroom with stairs leading to the second floor with third bedroom and en suite bathroom. The property has been decorated to a high standard throughout whilst retaining many period features.

Keble Street is a highly desirable residential street with easy access to both Earlsfield mainline railway station and Tooting Broadway underground station. A plethora of trendy restaurants, bars, leisure and shopping facilities are also within walking distance for a vibrant lifestyle.

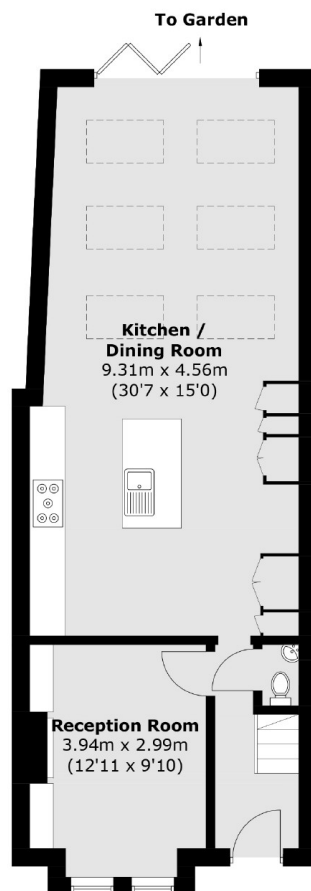




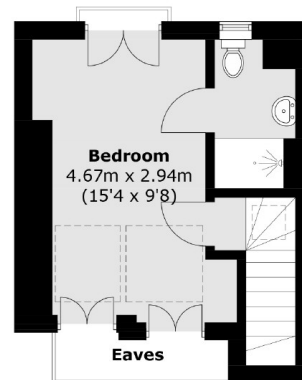




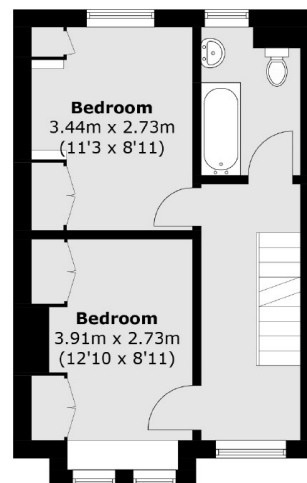
(Not Shown In Actual  
Location / Orientation)



**Ground Floor**



**Second Floor**



**First Floor**

Total area (approx.): 123.9 sq. m (1,333.5 sq. ft)  
(Excluding Eaves)

#### JACKSONS EARLSFIELD

372-374 Garratt Lane,  
Earlsfield, London, SW18 4ES  
Sales: 020 8971 7979  
Lettings: 020 8971 7070

Energy Rating: D We aim to make our particulars both accurate and reliable. However they are not guaranteed; nor do they form part of an offer or contract. If you require clarification on any points then please contact us, especially if you're traveling some distance to view. Please note that appliances and heating systems have not been tested and therefore no warranties can be given as to their good working order.