



GODLEY ROAD, SW18

£550,000

- Bright reception room
- Two double bedrooms
- First floor maisonette
- Large private garden
- No onward chain
- Energy rating: C



2



1



1



ABOUT THE HOME

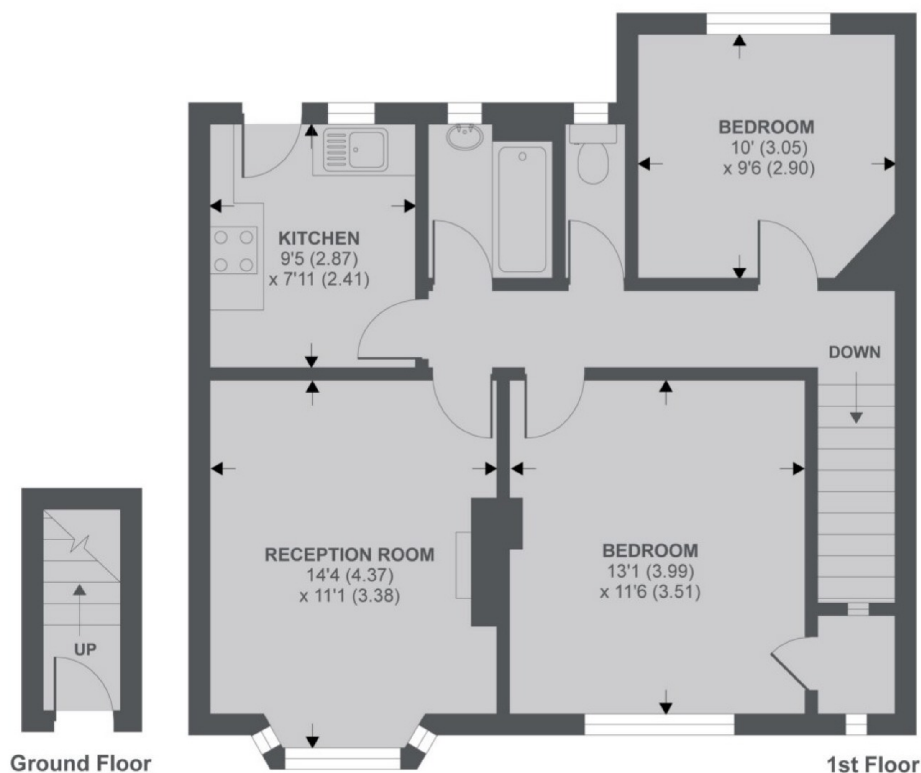
A beautifully presented two double bedroom maisonette with a large private garden being offered to the market with no onward chain.

This property offers a spacious and bright reception room with separate kitchen benefitting from an array of integrated appliances and an external staircase leading onto a large, private garden. There are two generously sized double bedrooms as well as a family bathroom and separate WC.

Godley Road is a popular residential road which sits within close proximity to Wandsworth Common as well as being only a short distance to Earlsfield Station which is only two stops from Waterloo Station as well as the many shops, restaurants and bars that Garratt Lane has to offer.







APPROX. GROSS INTERNAL FLOOR AREA 678 SQ FT 62.9 SQ METRES

Copyright nichecom.co.uk 2019 REF : 526767

JACKSONS EARLSFIELD

372-374 Garratt Lane,
Earlsfield, London, SW18 4ES
Sales: 020 8971 7979
Lettings: 020 8971 7070

Energy Rating: We aim to make our particulars both accurate and reliable. However they are not guaranteed; nor do they form part of an offer or contract. If you require clarification on any points then please contact us, especially if you're traveling some distance to view. Please note that appliances and heating systems have not been tested and therefore no warranties can be given as to their good working order.