



STEERFORTH STREET, SW18

£750,000

- Victorian Ground Floor Flat
- Two Double Bedrooms
- High Specification Finish
- Private Garden
- Share of Freehold
- Energy rating: C





## ABOUT THE HOME

A beautifully presented and newly developed two double bedroom, Victorian conversion flat which has been thoughtfully refurbished and extended by the current vendor to an excellent standard. The property is being offered to the market with no onward chain and a share of the freehold.

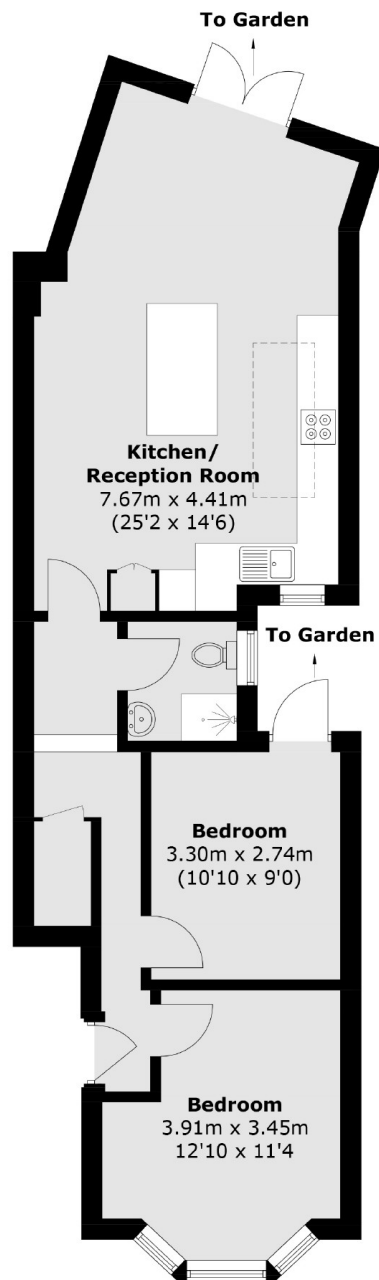
To the front of the property is a spacious and bright double bedroom with a bay window allowing natural light to flood into the room, adjacent is a second, well proportioned, double bedroom with a door leading to the private garden. Towards the rear you will find a modern bathroom as well as a beautiful and newly renovated kitchen/breakfast room which is open plan to the lounge, offering a fantastic entertaining space. The kitchen boasts an array on integrated appliances, ample storage and double doors leading onto the garden. The property also benefits from being 0.3 miles from Earlsfield Mainline Station.

Steerforth Street is one of Earlsfield's highly sought after, residential roads of similar Victorian buildings. This location is very well served by excellent transport links, restaurants, bars, leisure and shopping facilities all within close proximity. The property is within easy reach of Earlsfield Mainline Station (0.3 miles) with fast









Total area (approx.): 62.7 sq. m (674.9 sq. ft)

#### JACKSONS EARLSFIELD

372-374 Garratt Lane,  
Earlsfield, London, SW18 4ES  
Sales: 020 8971 7979  
Lettings: 020 8971 7070

Energy Rating: C We aim to make our particulars both accurate and reliable. However they are not guaranteed; nor do they form part of an offer or contract. If you require clarification on any points then please contact us, especially if you're traveling some distance to view. Please note that appliances and heating systems have not been tested and therefore no warranties can be given as to their good working order.