



WILLOW TREE CLOSE, SW18

£1,750 PCM

- Ground Floor Maisonette
- Reception Room
- Modern Fitted Kitchen
- Large Double Bedroom
- Private Rear Garden
- Ample Storage



1



1



1

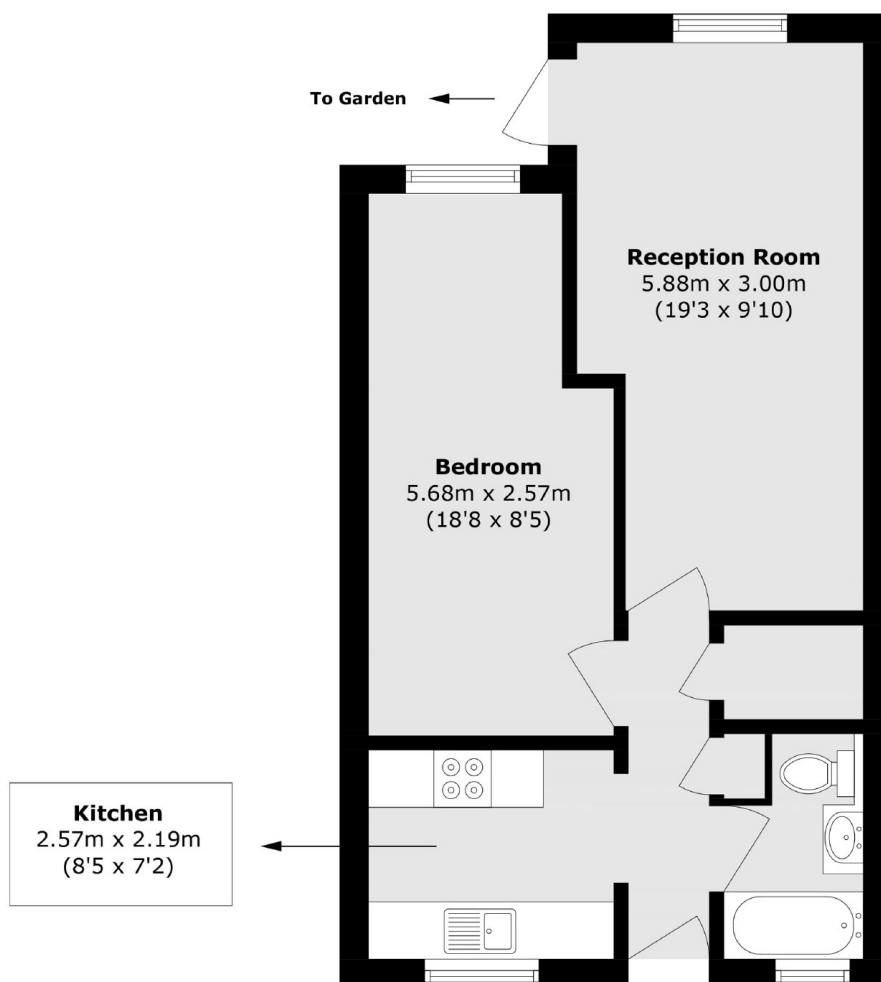


ABOUT THE HOME

A one bedroom ground floor maisonette with private rear garden. Including a reception room with space for dining, stylish modern fitted kitchen, a large double bedroom, storage cupboard, modern bathroom suite and a private rear garden.

Located within minutes of Earlsfield Station as well as the local amenities of Garratt Lane and open spaces of King Georges Park





Total area (approx.): 46.3 sq. m (498.4 sq. ft.)

JACKSONS EARLSFIELD

372-374 Garratt Lane,
Earlsfield, London, SW18 4ES
Sales: 020 8971 7979
Lettings: 020 8971 7070

Energy Rating: We aim to make our particulars both accurate and reliable. However they are not guaranteed; nor do they form part of an offer or contract. If you require clarification on any points then please contact us, especially if you're traveling some distance to view. Please note that appliances and heating systems have not been tested and therefore no warranties can be given as to their good working order.