



GARRATT LANE, SW18

£400,000

- One Double Bedroom
- Large Private Terrace
- Ground Floor
- No Onward Chain
- Allocated Parking Space
- Energy rating: C





## ABOUT THE HOME

A bright and spacious one bedroom, modern apartment boasting a large private terrace and allocated underground parking. The property is being offered to the market with no onward chain.

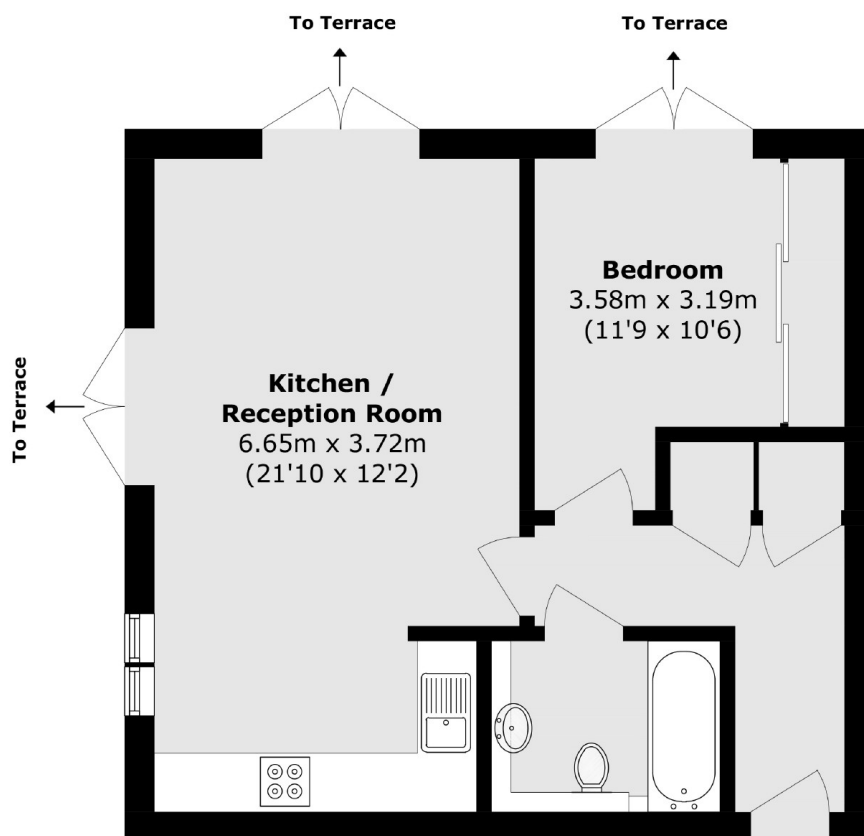
Situated on the ground floor in the highly sought after Voltaire Buildings, this spacious property benefits from a large private terrace as well as access to well maintained communal gardens. Accommodation comprises; hallway with two useful storage cupboards, wonderfully presented modern kitchen open plan to the reception and dining area which has double doors leading out to the private terrace, modern family bathroom, generous double bedroom with ample built in wardrobes and access to the terrace.

The development is located just 0.1 mile from Earlsfield's mainline station which offers quick access to Clapham Junction, London Waterloo and Wimbledon stations for effortless commuting. The location is also very well served by trendy coffee shops, boutique stores, bars, and restaurants all within walking distance of the property for a vibrant lifestyle.









Total area (approx.): 46.7 sq. m (502.7 sq. ft)

#### JACKSONS EARLSFIELD

372-374 Garratt Lane,  
Earlsfield, London, SW18 4ES  
Sales: 020 8971 7979  
Lettings: 020 8971 7070

Energy Rating: We aim to make our particulars both accurate and reliable. However they are not guaranteed; nor do they form part of an offer or contract. If you require clarification on any points then please contact us, especially if you're traveling some distance to view. Please note that appliances and heating systems have not been tested and therefore no warranties can be given as to their good working order.