



STEERFORTH STREET, SW18

£650,000

- Share of Freehold
- Two Double Bedrooms
- Open Plan Kitchen/Living
- South Facing Garden
- No Onward Chain
- Energy rating: C





ABOUT THE HOME

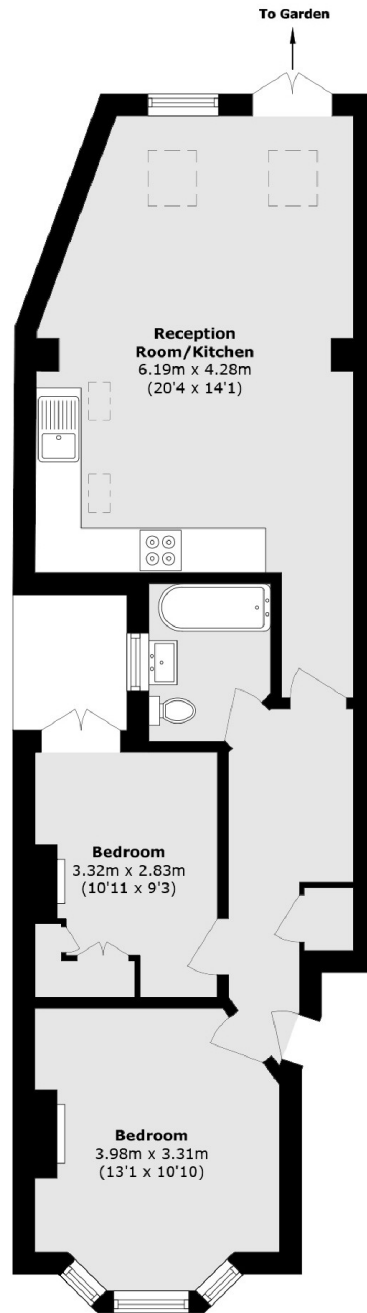
A lovely two double bedroom, ground floor, Victorian garden flat on a beautiful tree lined street.

Accommodation comprises; entrance hall with useful storage cupboard, two beautifully presented double bedrooms; the main bedroom boasts sash windows, high ceilings and a feature fireplace whilst the second bedroom offers generous built in wardrobes and access onto a courtyard. There is a superbly finished, modern bathroom and to the rear you'll find a spacious and bright, kitchen/dining room open plan to the reception room with doors leading on to a well maintained, south facing, private garden. The property further benefits from a share of the freehold and is being offered to the market with no onward chain.

Steerforth Street is one of Earlsfield's most prestigious residential roads being within easy reach of Earlsfield mainline station and Garratt Lane's vast array of amenities.







Total area (approx.): 58.0 sq. m (624.3 sq. ft)

JACKSONS EARLSFIELD

372-374 Garratt Lane,
Earlsfield, London, SW18 4ES
Sales: 020 8971 7979
Lettings: 020 8971 7070

Energy Rating: We aim to make our particulars both accurate and reliable. However they are not guaranteed; nor do they form part of an offer or contract. If you require clarification on any points then please contact us, especially if you're traveling some distance to view. Please note that appliances and heating systems have not been tested and therefore no warranties can be given as to their good working order.