



EARLSFIELD ROAD, SW18

£650,000

- Victorian First Floor Flat
- Two Double Bedrooms
- No Onward Chain
- High Specification
- Separate Lounge and Kitchen
- Energy rating: C



2



1



1

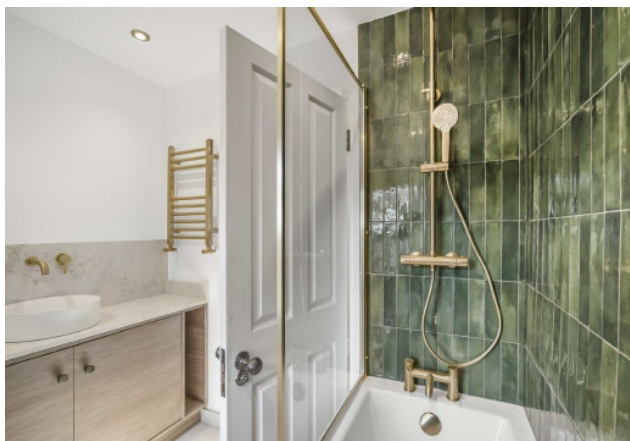


ABOUT THE HOME

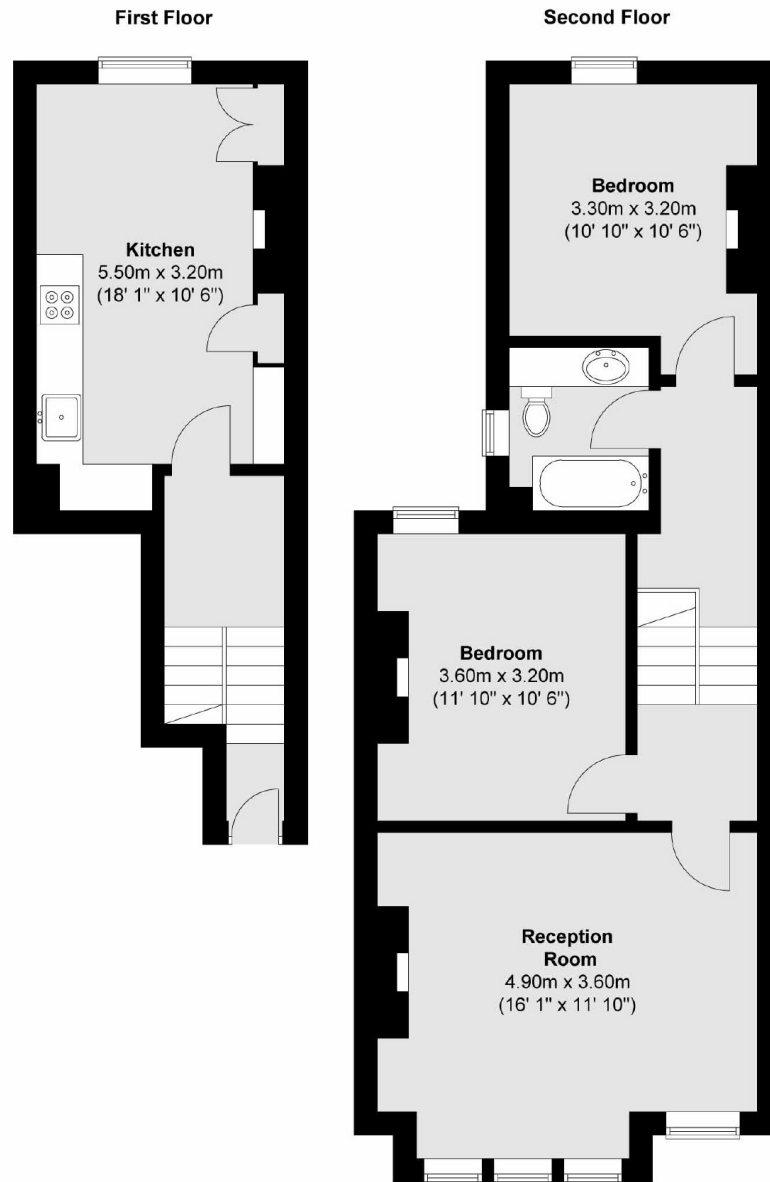
A beautifully presented and newly developed two bedroom, split level Victorian conversion flat, thoughtfully refurbished by the current vendor to an excellent standard.

Stairs lead to a spacious first floor landing, a high specification kitchen, to the rear, which offers ample space for dining and a spacious double bedroom. To the front of the property is a large, bright reception room with exceptionally high ceilings which really add to the overall sense of space. Stairs lead to the second floor comprising; a second, well proportioned, double bedroom and modern bathroom. The property is being offered to the market with no onward chain.

Earlsfield Road is one of Earlsfield's highly sought after roads of similar Victorian buildings with incredible curb appeal. This location is very well served by excellent transport links, trendy coffee shops, boutique stores, bars, and restaurants which are all within close proximity. The property is within 0.5 miles of Earlsfield Mainline Station with fast connections to Central London for effortless commuting.







Total area (approx.) : 79.5 sq. m (856 sq. ft)

JACKSONS EARLSFIELD

372-374 Garratt Lane,
Earlsfield, London, SW18 4ES
Sales: 020 8971 7979
Lettings: 020 8971 7070

Energy Rating: We aim to make our particulars both accurate and reliable. However they are not guaranteed; nor do they form part of an offer or contract. If you require clarification on any points then please contact us, especially if you're traveling some distance to view. Please note that appliances and heating systems have not been tested and therefore no warranties can be given as to their good working order.