



STRATHVILLE ROAD, SW18

£450,000

- Victorian Ground Floor Flat
- Share Of Freehold
- Large Private Garden
- Chain Free
- Sought After Location
- Energy Rating: D



1



1



1



ABOUT THE HOME

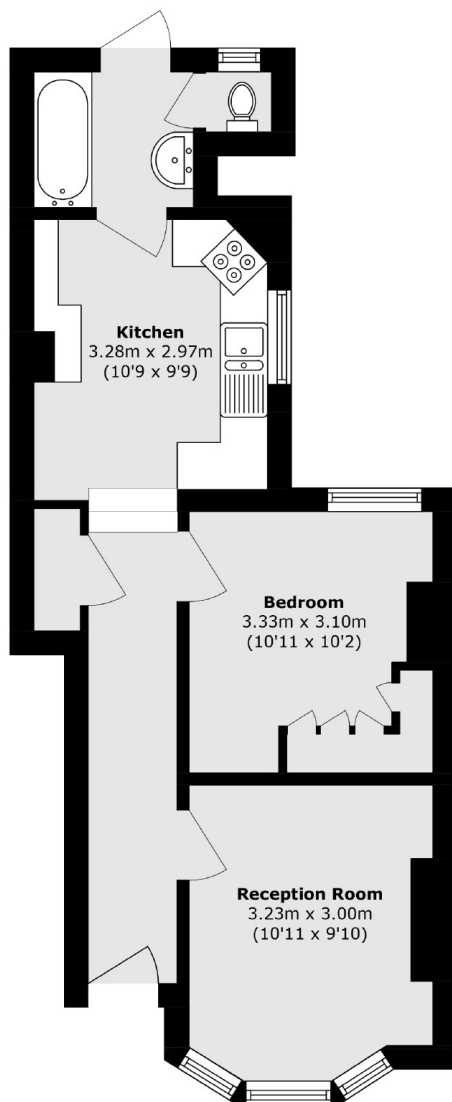
OFFERS IN ACCESS A spacious one double bedroom, Victorian Conversion flat located on a highly desirable residential road in Earlsfield.

Accommodation comprises; a bright and spacious reception room to the front and a generous double bedroom with exceptionally high ceilings and useful built in wardrobes. There is a generously sized kitchen and bathroom to the rear providing direct access to a large private garden. The property is adorned with period features throughout and is being offered to the market with no onward chain. The property can also be accessed from a passage way at the rear of the garden.

Strathville Road is a much sought after road in Earlsfield, the property is well placed for some of the most desirable schools in the area and is a short walk from Earlsfield, Southfields and Wimbledon Park stations. Garratt Lane with its array of shops, bars and restaurants is within easy reach. The green open spaces of King George's Park are close by.







Total area (approx.): 46.2 sq. m (497.2 sq. ft)

JACKSONS EARLSFIELD

372-374 Garratt Lane,
Earlsfield, London, SW18 4ES
Sales: 020 8971 7979
Lettings: 020 8971 7070

Energy Rating: We aim to make our particulars both accurate and reliable. However they are not guaranteed; nor do they form part of an offer or contract. If you require clarification on any points then please contact us, especially if you're traveling some distance to view. Please note that appliances and heating systems have not been tested and therefore no warranties can be given as to their good working order.