



STEERFORTH STREET, SW18

£650,000

- Victorian Ground Floor Flat
- Two Double Bedrooms
- Large Private Garden
- Share of Freehold
- Sought After Location
- Energy rating: C





ABOUT THE HOME

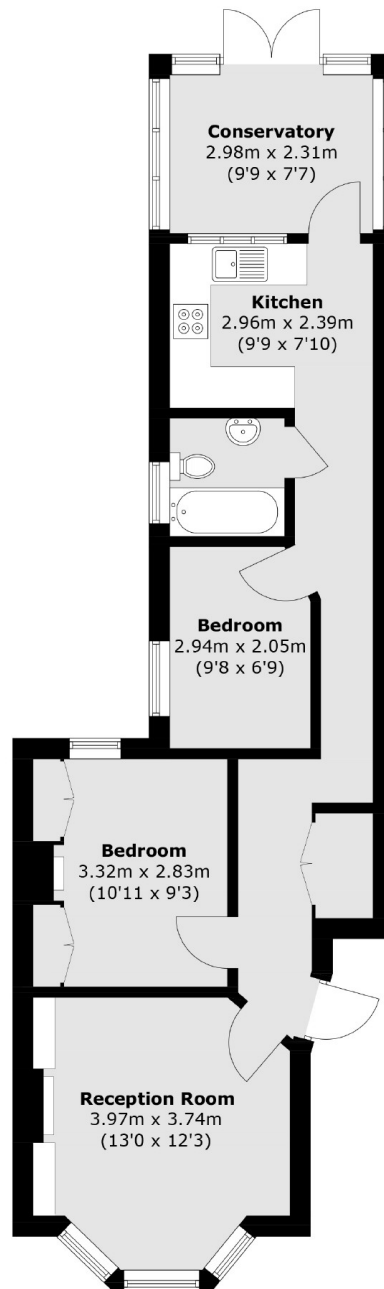
A beautifully presented ground floor Victorian conversion flat with a private garden and a share of the freehold.

Accommodation comprises of; entrance hall, stylish and well presented reception room benefitting from an abundance of light, generous double bedroom with high ceilings, feature fireplace and ample built in storage, useful under stair storage, second double bedroom, modern bathroom, kitchen with an array of integrated appliances and conservatory with direct access onto a generous rear garden. The property is in very good condition with a contemporary finish throughout.

Steerforth Street is part of a grid of quiet residential roads of similar style of properties, which are consistently sought after being a short distance of central Earlsfield. This location is very well served by excellent transport links, restaurants, bars, leisure and shopping facilities all within close proximity of the property. Earlsfield mainline station is a distance of 0.3 mile.







Total area (approx.): 59.5 sq. m (640.4 sq. ft)

JACKSONS EARLSFIELD

372-374 Garratt Lane,
Earlsfield, London, SW18 4ES
Sales: 020 8971 7979
Lettings: 020 8971 7070

Energy Rating: We aim to make our particulars both accurate and reliable. However they are not guaranteed; nor do they form part of an offer or contract. If you require clarification on any points then please contact us, especially if you're traveling some distance to view. Please note that appliances and heating systems have not been tested and therefore no warranties can be given as to their good working order.