



SQUAREY STREET, SW17

£950,000

- Victorian Terraced House
- Three Double Bedrooms
- Private Garden
- Sought After Location
- No Onward Chain
- Energy rating: D





ABOUT THE HOME

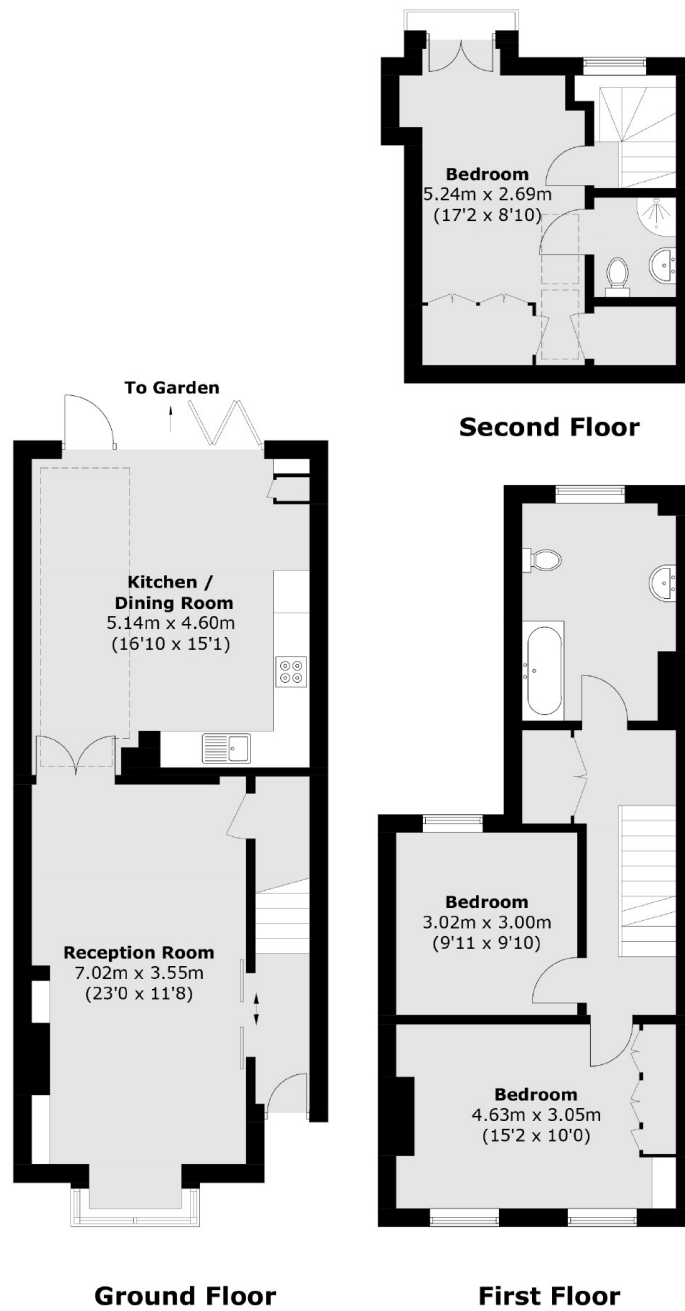
A beautiful, three bedroom, mid terrace, Victorian house with a private garden. The property is being offered to the market with no onward chain.

Accommodation comprises; an entrance hall leading to a spacious double reception room with a feature fireplace, offering ample space for a lounge and dining room, a spacious and bright kitchen/breakfast room boasting an array of integrated appliances and bi-fold doors opening out to a private, low maintenance garden. On the first floor, there are two, well proportioned, double bedrooms, one of which provides useful, built in wardrobes and a large, high specification, family bathroom. The second floor comprises, a third double bedroom benefitting from an en suite bathroom, built in wardrobes, a Juliet balcony and extra storage in the eaves.

Squarey Street is part of a sought after, residential, enclave of streets offering easy access to Earlsfield mainline railway station, Tooting Broadway Underground station and Wandsworth Common.







Total area (approx.): 118.3 sq. m (1,273.4 sq. ft)

JACKSONS EARLSFIELD

372-374 Garratt Lane,
Earlsfield, London, SW18 4ES
Sales: 020 8971 7979
Lettings: 020 8971 7070

Energy Rating: We aim to make our particulars both accurate and reliable. However they are not guaranteed; nor do they form part of an offer or contract. If you require clarification on any points then please contact us, especially if you're traveling some distance to view. Please note that appliances and heating systems have not been tested and therefore no warranties can be given as to their good working order.