



EARLSFIELD ROAD, SW18

£650,000

- Victorian Ground Floor Flat
- Two Double Bedrooms
- Large Private Garden
- No Onward Chain
- Sought After Location
- Energy rating: C





ABOUT THE HOME

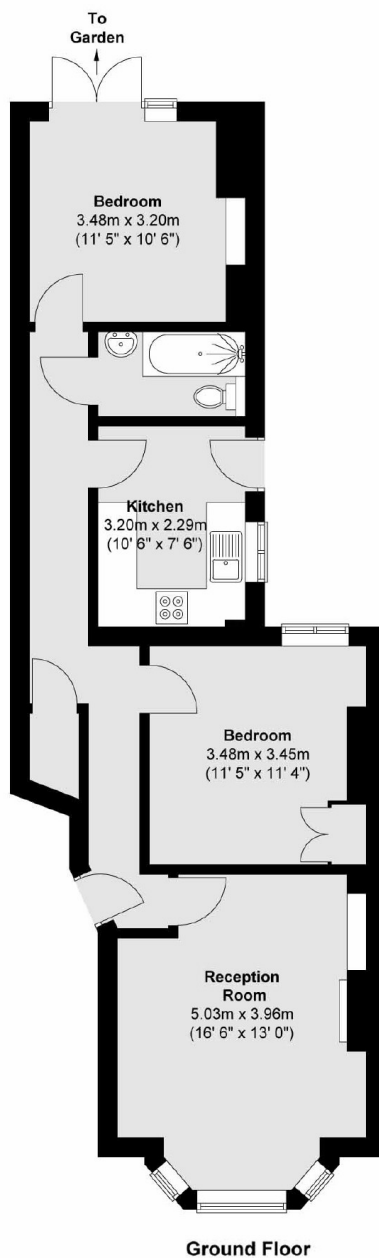
A well presented, two double bedroom, ground floor, Victorian conversion with a well maintained, private rear garden. The property is being offered to the market with no onward chain.

Accommodation comprises; entrance hall with a large, useful storage cupboard, a beautifully presented, bright reception room with a bay window and feature fireplace, adjacent is a generous double bedroom boasting exceptionally high ceilings and built in wardrobes, kitchen with a door leading to the side return and garden, modern bathroom and a second double bedroom to the rear with double doors onto the large, private garden.

Earlsfield Road is one of Earlsfield's highly sought after residential roads of similar Victorian buildings. This location is very well served by excellent transport links, restaurants, bars, leisure and shopping facilities all within close proximity. The property is within 0.6 miles of Earlsfield Mainline Station with fast connections to Central London.







Total area (approx.) : 66.1 sq. m (712 sq. ft)

JACKSONS EARLSFIELD

372-374 Garratt Lane,
Earlsfield, London, SW18 4ES
Sales: 020 8971 7979
Lettings: 020 8971 7070

Energy Rating: We aim to make our particulars both accurate and reliable. However they are not guaranteed; nor do they form part of an offer or contract. If you require clarification on any points then please contact us, especially if you're traveling some distance to view. Please note that appliances and heating systems have not been tested and therefore no warranties can be given as to their good working order.