



DUNTSHILL ROAD, SW18

£750,000

- Three Bedrooms
- Edwardian Maisonette
- Private Garden
- South facing
- Excellent Condition
- Sought After Location





ABOUT THE HOME

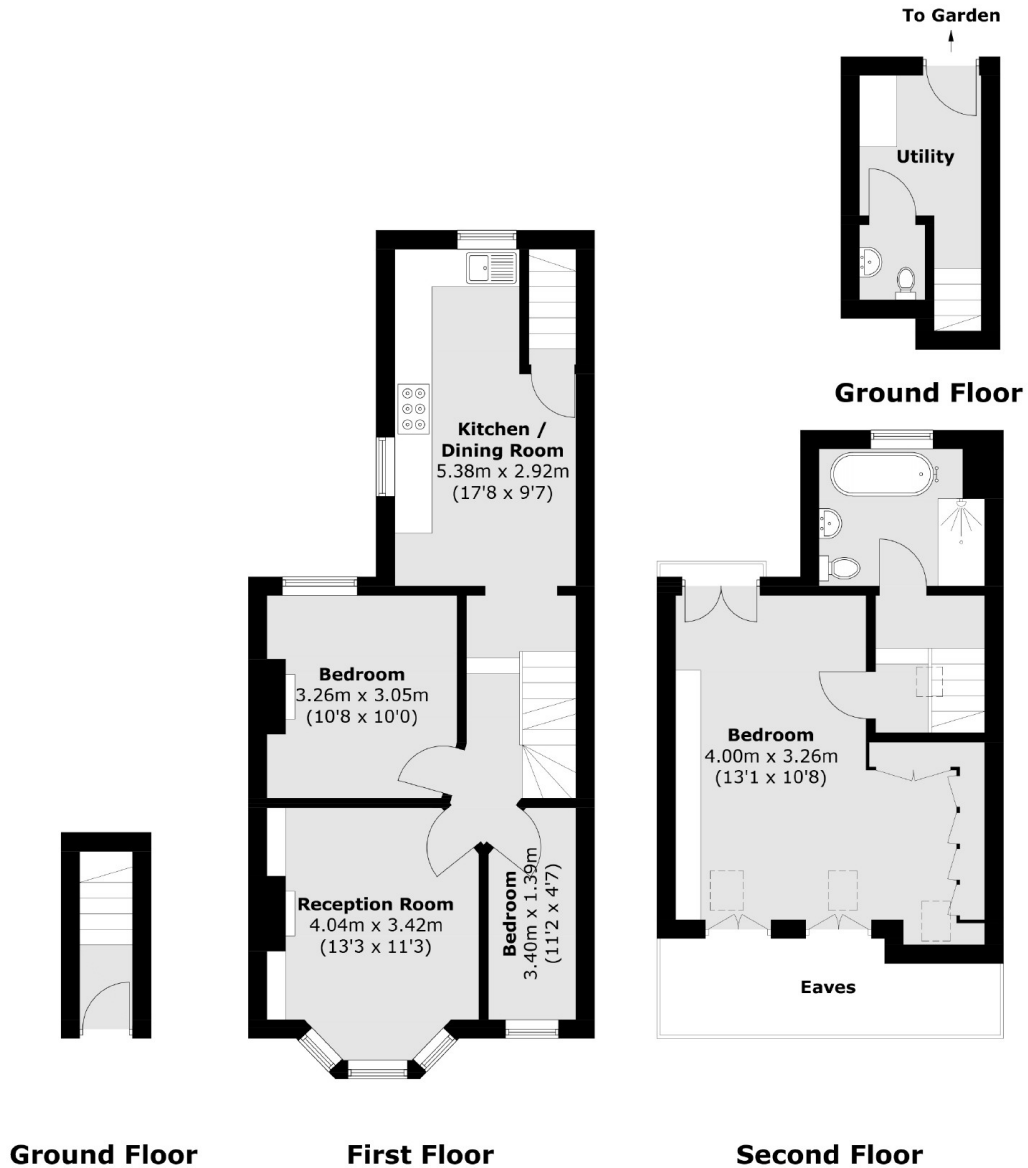
A superbly presented three bedroom, split level period maisonette with a private rear garden. The property is situated 0.2 miles from Earlsfield mainline station.

The property has been extended into the loft to offer over 1000 sq.ft of accommodation. Accommodation comprises; own front door, entrance hall with stairs leading to the first floor landing, cosy reception room, beautifully presented kitchen/dining room offering a great entertaining space with internal stairs leading to a ground floor utility room, WC and a large private South facing garden. The property boasts three bedrooms; the third currently being used as a nursery and an impressive family bathroom.

The property is located on one of Earlsfield's most sought after residential roads, being within easy reach of Earlsfield Primary School, Earlsfield mainline station and Garratt Lane's array of amenities. Furthermore, King George's park is just a short walk from the property with its green open spaces.







Total area (approx.): 93.8 sq. m (1,009.6 sq. ft)
(Excluding Eaves)

JACKSONS EARLSFIELD

372-374 Garratt Lane,
Earlsfield, London, SW18 4ES
Sales: 020 8971 7979
Lettings: 020 8971 7070

Energy Rating: D We aim to make our particulars both accurate and reliable. However they are not guaranteed; nor do they form part of an offer or contract. If you require clarification on any points then please contact us, especially if you're traveling some distance to view. Please note that appliances and heating systems have not been tested and therefore no warranties can be given as to their good working order.