



FIELDVIEW, SW18

£700,000

- Three Double Bedrooms
- Ground Floor Maisonette
- Large Private Garden
- Excellent Condition
- Open Plan Kitchen/Living
- Energy rating: D





ABOUT THE HOME

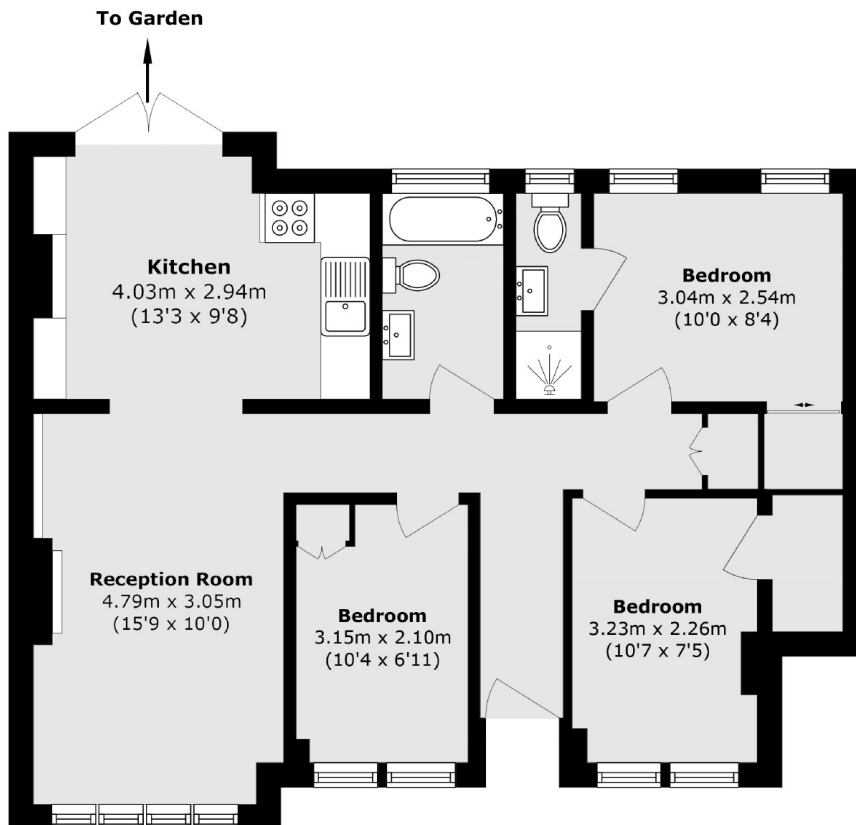
A wonderfully presented three bedroom, two bathroom, ground floor, 1930's maisonette offering generous living accommodation and a large private garden.

The property benefits from well maintained front and rear gardens. Accommodation comprises it's own front door leading to a well presented entrance hallway, an impressive family bathroom and three double bedrooms all offering useful build in wardrobes; the main bedroom boasts a modern en suite bathroom. There is a tastefully decorated and bright reception room open plan to the dining area/modern eat-in kitchen which offers a fantastic entertaining space and doors leading to a large landscaped rear garden. The property further benefits from side access to the garden.

Fieldview is a sought after residential road situated on the ever popular Magdalen Estate, conveniently located for Beatrix Potter school, Earlsfield railway station and less than 0.5 of a mile from the beautiful wide open spaces of Wandsworth Common.







Total area (approx.): 69.2 sq. m (744.8 sq. ft)

JACKSONS EARLSFIELD

372-374 Garratt Lane,
Earlsfield, London, SW18 4ES
Sales: 020 8971 7979
Lettings: 020 8971 7070

Energy Rating: We aim to make our particulars both accurate and reliable. However they are not guaranteed; nor do they form part of an offer or contract. If you require clarification on any points then please contact us, especially if you're traveling some distance to view. Please note that appliances and heating systems have not been tested and therefore no warranties can be given as to their good working order.