



ST. GEORGES GROVE, SW17

£325,000

- Modern Apartment
- Private Balcony
- No Onward Chain
- Good Condition
- Sought After Location
- Energy Rating: B



1



1



1



ABOUT THE HOME

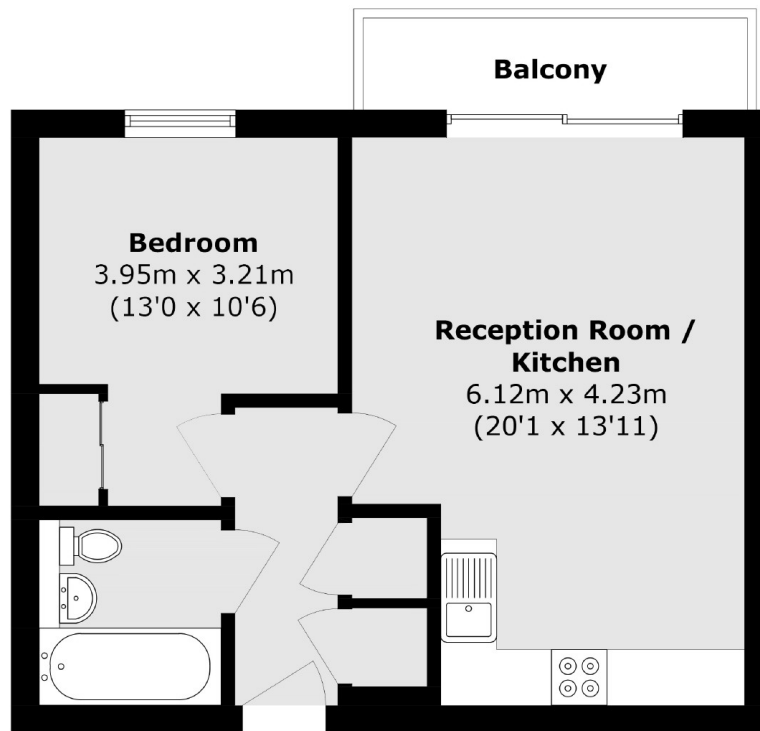
A modern, one bedroom apartment located in a purpose built building in the popular St Georges Grove development. The property benefits from a private balcony and no onward chain.

The property has a private balcony and in our opinion would be an ideal first time or buy to let purchase. With well proportioned rooms throughout, the internal accommodation is spacious throughout. And comprises; entrance hall with secure telephone entry system and large storage cupboard, one double bedroom with built in wardrobe, modern bathroom and open plan kitchen/living room with ample space for dining and doors that lead out to the balcony.

The property is situated in the highly sought after St. George's Grove development formally known as the 'Quadrangle', gives ease of access to both Earlsfield mainline station and Tooting Broadway underground Station (Northern Line). Garratt Lane's array of bars, restaurants and convenience stores are also close by.







Total area (approx.): 46.5 sq. m (500.5 sq. ft)

Balcony area (approx.): 4.0 sq. m (43.0 sq. ft)

JACKSONS EARLSFIELD

372-374 Garratt Lane,
Earlsfield, London, SW18 4ES
Sales: 020 8971 7979
Lettings: 020 8971 7070

Energy Rating: B We aim to make our particulars both accurate and reliable. However they are not guaranteed; nor do they form part of an offer or contract. If you require clarification on any points then please contact us, especially if you're traveling some distance to view. Please note that appliances and heating systems have not been tested and therefore no warranties can be given as to their good working order.