



JUNIPER DRIVE, SW18

£635,000

- Private Balcony
- Open Plan Living
- Beautiful Finish
- Allocated Parking Space
- Popular Location
- Energy Rating: C





ABOUT THE HOME

Finished to an immaculate standard is this beautiful two double bedroom, modern luxury apartment located on the seventh floor in the ever popular Battersea Reach development.

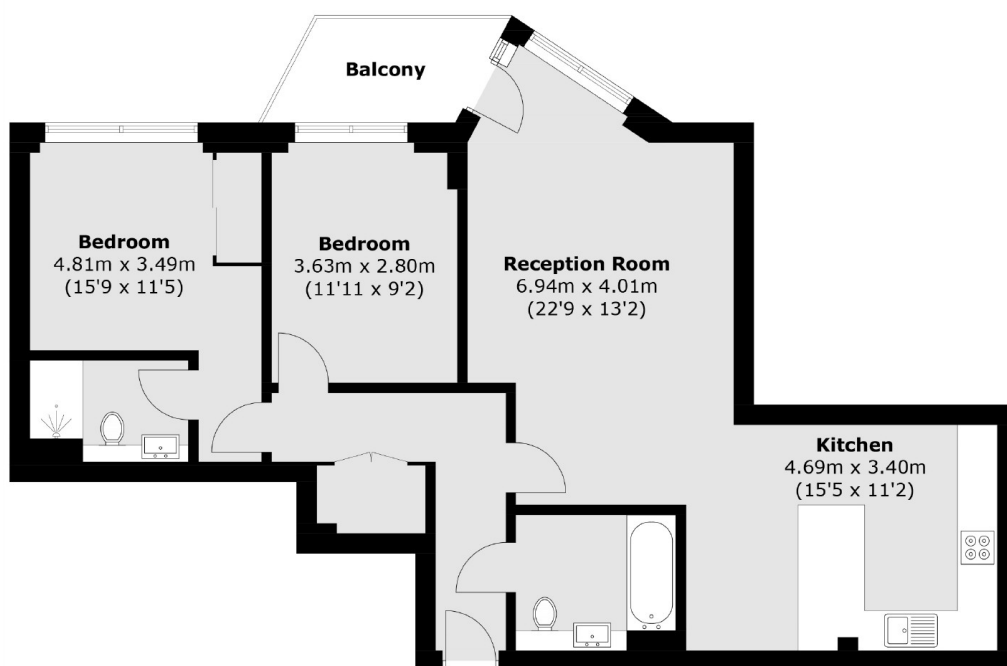
This property offers a spacious open plan kitchen / living room with plenty of space for a separate dining area. There are two good sized double bedrooms one with the benefit of built in storage and a newly renovated ensuite bathroom. This property benefits from a second luxury bathroom, storage cupboard in the hall and it's own parking space.

This property offers a spacious open plan kitchen / living room with plenty of space for a separate dining area. There are two good sized double bedrooms one with the benefit of built in storage and a newly renovated ensuite bathroom. This property benefits from a second luxury bathroom, storage cupboard in the hall and it's own parking space.

Battersea Reach is a desirable riverside development which is ideally positioned for easy access to Central London via Wandsworth Town Station and Clapham Junction. Whilst being a short distance from the popular shops, bars and restaurants of Wandsworth Town and







Total area (approx.): 81.6 sq. m (878.3 sq. ft)
Balcony : 4.5 sq. m (48.4 sq. ft)

JACKSONS EARLSFIELD

372-374 Garratt Lane,
Earlsfield, London, SW18 4ES
Sales: 020 8971 7979
Lettings: 020 8971 7070

Energy Rating: C We aim to make our particulars both accurate and reliable. However they are not guaranteed; nor do they form part of an offer or contract. If you require clarification on any points then please contact us, especially if you're traveling some distance to view. Please note that appliances and heating systems have not been tested and therefore no warranties can be given as to their good working order.