



## ST. GEORGES GROVE, SW17

£500,000

- Two Double Bedrooms
- Open Plan Kitchen/Reception
- Allocated Parking
- Private Balcony
- Modern Build
- Energy Rating: B



2



2



1

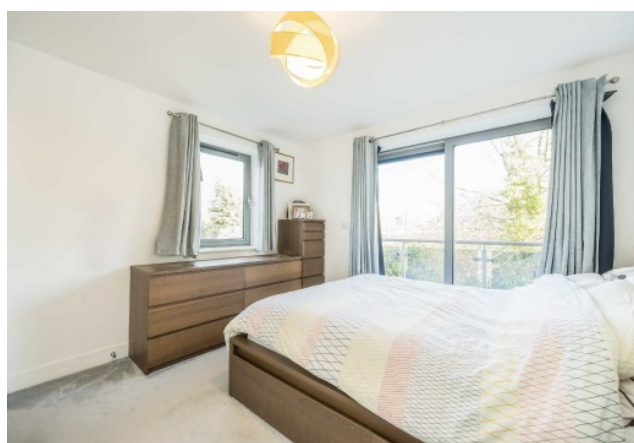




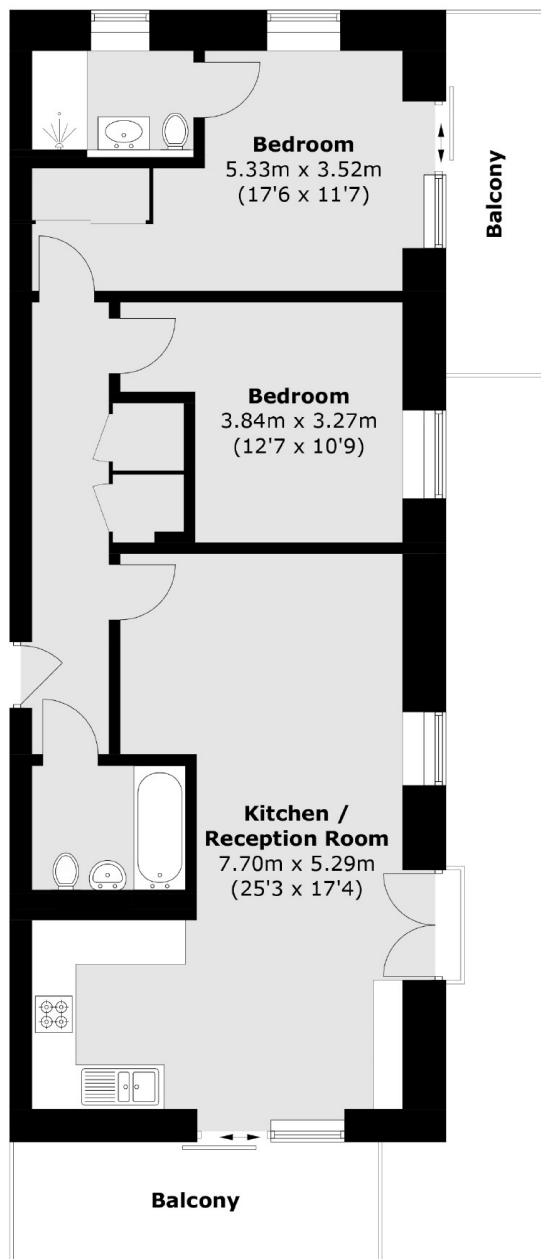
## ABOUT THE HOME

A beautifully presented two double bedroom, modern apartment with the benefit of it's own private balcony and parking space. This property offers a bright and spacious open plan kitchen / reception room. There are two good sized double bedrooms as well as two modern bathrooms in the property.

The property is situated in the highly sought after St. George's Grove development formally known as the 'Quadrangle', gives ease of access to both Earlsfield mainline station and Tooting Broadway underground Station (Northern Line). The property also benefits from direct access to the newly developed Springfield Park.







Total area (approx.): 74.5 sq. m (801.9 sq. ft)  
Balcony : 14.6 sq. m (157.1 sq. ft)

#### JACKSONS EARLSFIELD

372-374 Garratt Lane,  
Earlsfield, London, SW18 4ES  
Sales: 020 8971 7979  
Lettings: 020 8971 7070

Energy Rating: B We aim to make our particulars both accurate and reliable. However they are not guaranteed; nor do they form part of an offer or contract. If you require clarification on any points then please contact us, especially if you're traveling some distance to view. Please note that appliances and heating systems have not been tested and therefore no warranties can be given as to their good working order.