



EARLSFIELD ROAD, SW18

£525,000

- Close to Wandsworth Common
- Communal Gardens
- Victorian Conversion
- Off Street Parking
- Central Location
- Energy Rating: D





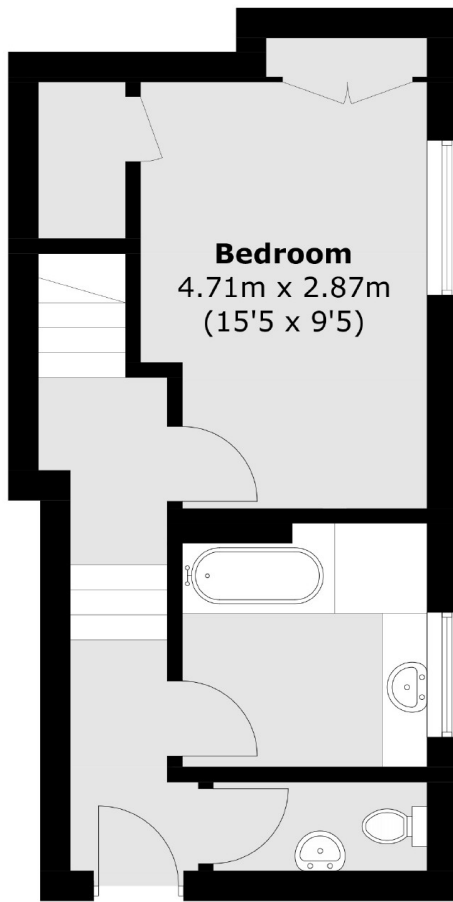
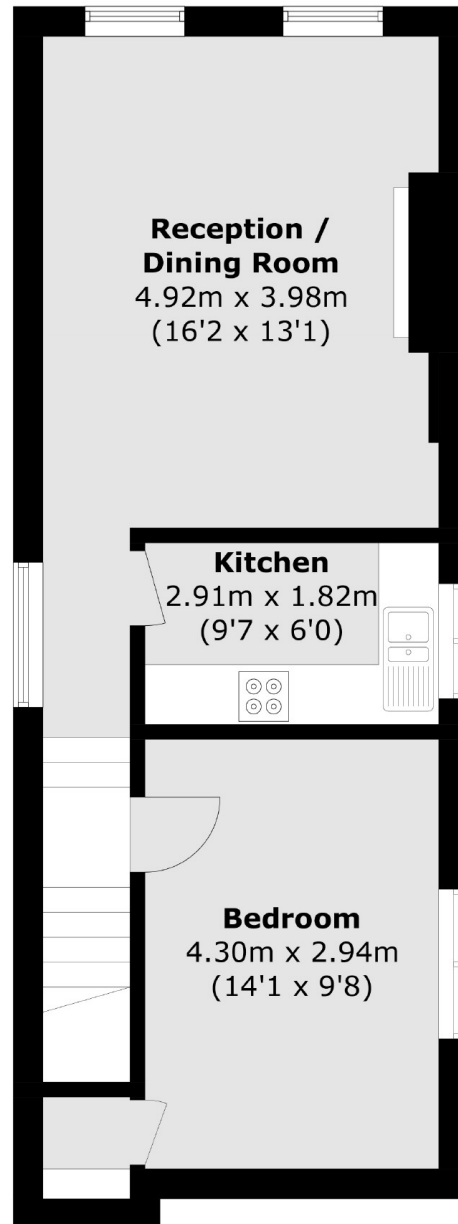
ABOUT THE HOME

Set in an impressive building is this two double bedroom, Victorian conversion flat. This property offers a bright and spacious reception room with separate kitchen. There are two good sized double bedrooms, both with ample built in storage space.

Earlsfield Road is located just moments from Earlsfield Station and the many shops, restaurants and bars that Earlsfield has to offer. The green open spaces of Wandsworth Common are also only a short distance away.





**First Floor****Second Floor**

Total area (approx.): 75.5 sq. m (812.6 sq. ft)

JACKSONS EARLSFIELD

372-374 Garratt Lane,
Earlsfield, London, SW18 4ES
Sales: 020 8971 7979
Lettings: 020 8971 7070

Energy Rating: D We aim to make our particulars both accurate and reliable. However they are not guaranteed; nor do they form part of an offer or contract. If you require clarification on any points then please contact us, especially if you're traveling some distance to view. Please note that appliances and heating systems have not been tested and therefore no warranties can be given as to their good working order.