



KIMBER ROAD, SW18

£650,000

- Victorian Conversion
- Chain Free
- Two Bathrooms
- Private Garden
- Share of Freehold
- Energy rating: D





## ABOUT THE HOME

A beautifully presented three bedroom, share of freehold, Victorian property with a private garden.

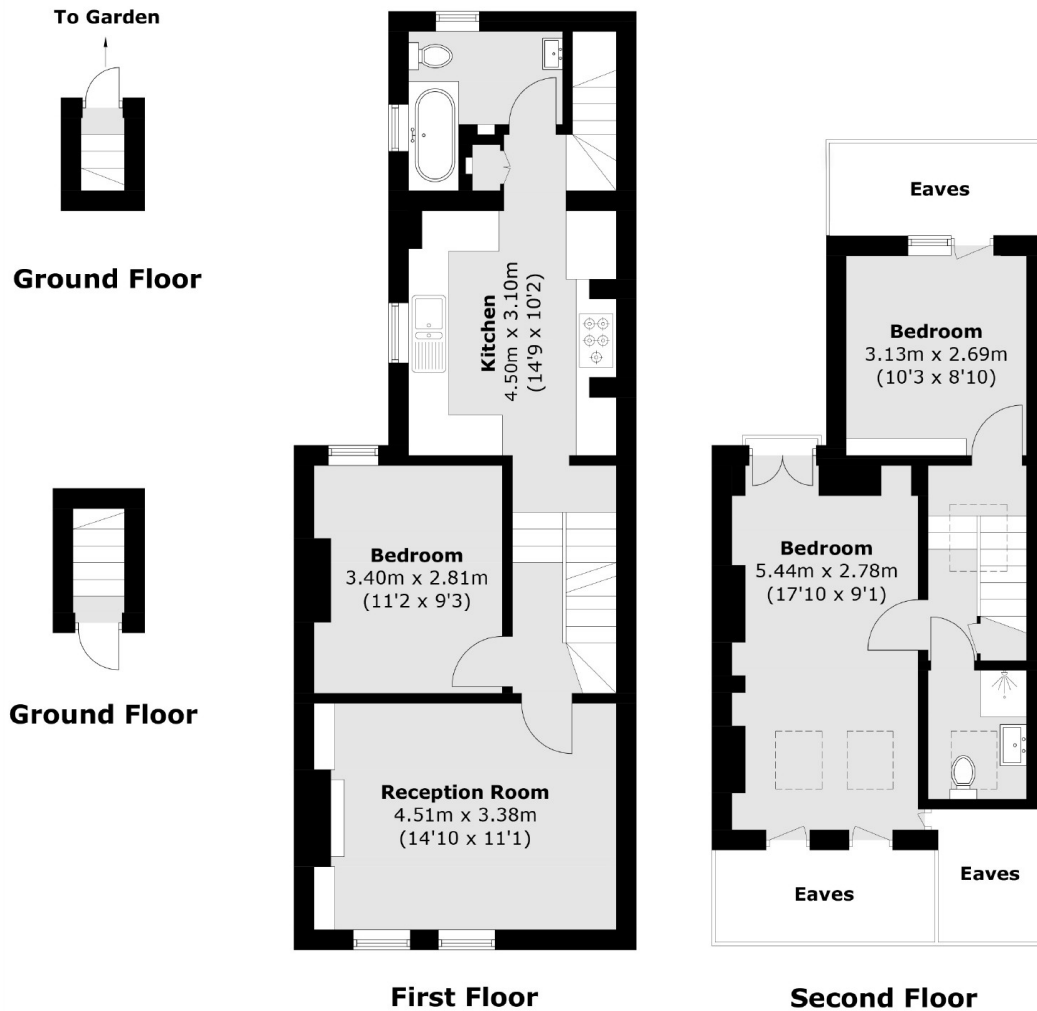
Accommodation comprises; bright reception room to the front, spacious double bedroom, a well presented eat in kitchen/breakfast room with an array of integrated appliances and a modern bathroom to the rear. Stairs lead to a low maintenance private garden. On the second floor is a further double bedroom, a second modern bathroom and the third principle bedroom which benefits from abundance of natural light and useful eaves storage. The property further benefits from a share of the freehold.

Kimber Road is a residential road of similar period buildings, which are sought after being equidistant from Earlsfield and Wandsworth Town. This location is very well served by excellent transport links, restaurants, bars, leisure and shopping facilities all within close proximity of the property, as are the green open spaces of King George's Park.









### JACKSONS EARLSFIELD

372-374 Garratt Lane,  
Earlsfield, London, SW18 4ES  
Sales: 020 8971 7979  
Lettings: 020 8971 7070

Energy Rating: D We aim to make our particulars both accurate and reliable. However they are not guaranteed; nor do they form part of an offer or contract. If you require clarification on any points then please contact us, especially if you're traveling some distance to view. Please note that appliances and heating systems have not been tested and therefore no warranties can be given as to their good working order.