



WIMBLEDON ROAD, SW17

£700,000

- Victorian Terraced House
- Three Bedrooms
- Chain Free
- Private Rear Garden
- Sought After Location
- Energy rating: D





ABOUT THE HOME

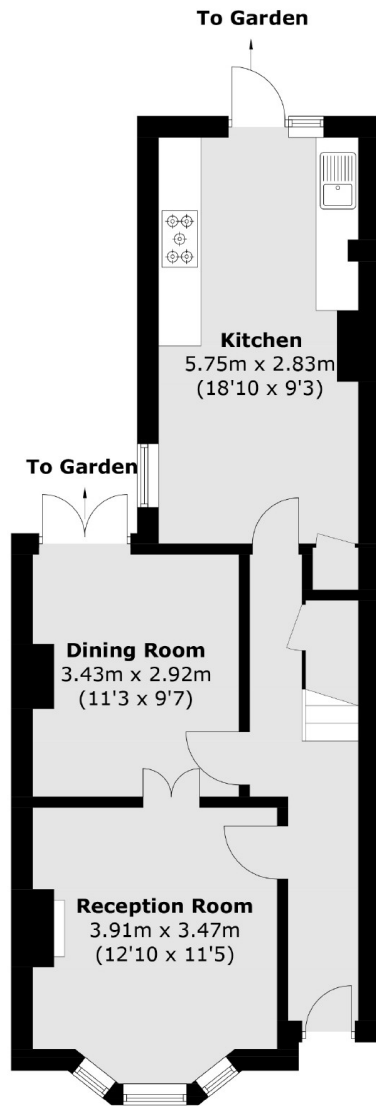
A three bedroom Victorian terraced house with a generous private rear garden.

Accommodation comprises; a spacious and bright double reception room offering ample space for a dining area with the option to separate the two rooms; the dining room has double doors leading to the garden generous private garden, to the rear is an eat in kitchen/ breakfast room also giving access to the garden, upstairs there are three bedrooms and a family bathroom. This family home has scope to extend further subject to planning permission.

The property is situated in a sought after location offering easy access to Earlsfield mainline railway station, Tooting Broadway underground station and Wandsworth Common. The green spaces of Garratt Park are just a short walk away.





**Ground Floor****First Floor**

Total area (approx.): 95.9 sq. m (1032.3 sq. ft)

JACKSONS EARLSFIELD

372-374 Garratt Lane,
Earlsfield, London, SW18 4ES
Sales: 020 8971 7979
Lettings: 020 8971 7070

Energy Rating: We aim to make our particulars both accurate and reliable. However they are not guaranteed; nor do they form part of an offer or contract. If you require clarification on any points then please contact us, especially if you're traveling some distance to view. Please note that appliances and heating systems have not been tested and therefore no warranties can be given as to their good working order.