



KIMBER ROAD, SW18

£700,000

- Victorian Conversion
- Three Bedrooms
- Roof Terrace
- Share of Freehold
- Sought After Location
- Energy rating: D





## ABOUT THE HOME

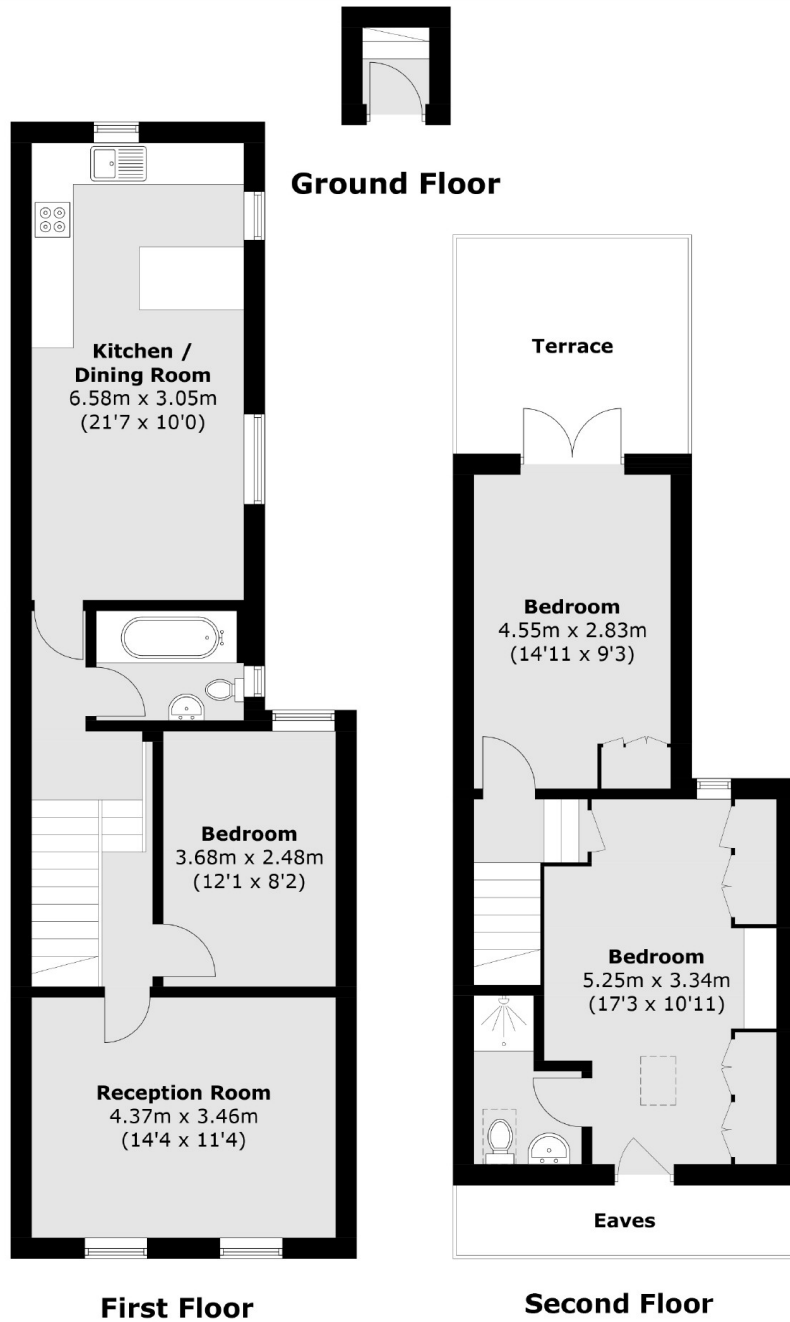
A beautifully presented, three bedroom, share of freehold, Victorian property located in a popular residential location.

Accommodation comprises; bright and spacious reception room to the front, generous double bedroom, modern family bathroom and a high specification kitchen/dining room with an array of integrated appliances. Stairs lead to two further bedrooms. The principle bedroom benefits from ample built in wardrobes and an en suite bathroom and the third bedroom boasts access onto a large private roof terrace. The property further benefits from a share of the freehold.

Kimber Road is a residential road of similar period buildings, which are sought after being equidistant from Earlsfield and Wandsworth Town. This location is very well served by excellent transport links, restaurants, bars, leisure and shopping facilities all within close proximity of the property, as are the green open spaces of King George's Park.







Total area (approx.): 95.3 sq. m (1,025.8 sq. ft)  
Terrace: 10.3 sq. m (110.9 sq. ft)  
(Excluding Eaves)

#### JACKSONS EARLSFIELD

372-374 Garratt Lane,  
Earlsfield, London, SW18 4ES  
Sales: 020 8971 7979  
Lettings: 020 8971 7070

Energy Rating: D We aim to make our particulars both accurate and reliable. However they are not guaranteed; nor do they form part of an offer or contract. If you require clarification on any points then please contact us, especially if you're traveling some distance to view. Please note that appliances and heating systems have not been tested and therefore no warranties can be given as to their good working order.