



## Peartree Avenue, SW17

£1,250 PCM

Set within a quiet development benefitting allocated parking and communal gardens is this two double bedroom first floor modern apartment with fitted storage and stunning views over the park.

- First Floor Apartment
- Two Double Bedrooms
- Fitted Storage
- Park Views
- Allocated Parking
- Furnished

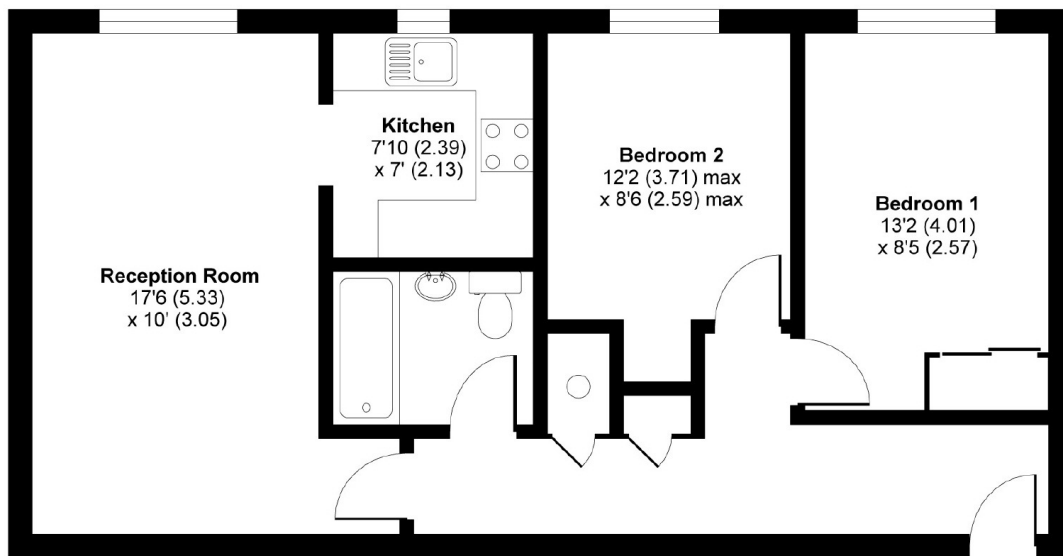
For further information on the costs associated with renting a property, please pop into our office or visit our website.



Including a reception room with space for dining, modern fitted kitchen, two double bedrooms, modern bathroom suite.

Pear tree development is located within a short distance of Earlsfield Station as well as the popular bars and restaurants of Garratt Lane.





FIRST FLOOR

APPROX. GROSS INTERNAL FLOOR AREA 621 SQ FT 57.6 SQ METRES

Peartree Avenue, London, SW17

Copyright nichecom.co.uk 2014 Produced for Jacksons the Independent Estate Agents REF : 607485

Jacksons Earlsfield  
372-374 Garratt Lane  
Earlsfield  
London  
SW18 4ES  
020 8971 7979

Energy Rating: C We aim to make our particulars both accurate and reliable. However they are not guaranteed; nor do they form part of an offer or contract. If you require clarification on any points then please contact us, especially if you're traveling some distance to view. Please note that appliances and heating systems have not been tested and therefore no warranties can be given as to their good working order.