



RAVENSBURY ROAD, SW18

£1,200,000

- Victorian Freehold House
- Four Bedrooms
- Excellent Condition
- Large Private Garden
- Popular Location
- Energy rating: E





ABOUT THE HOME

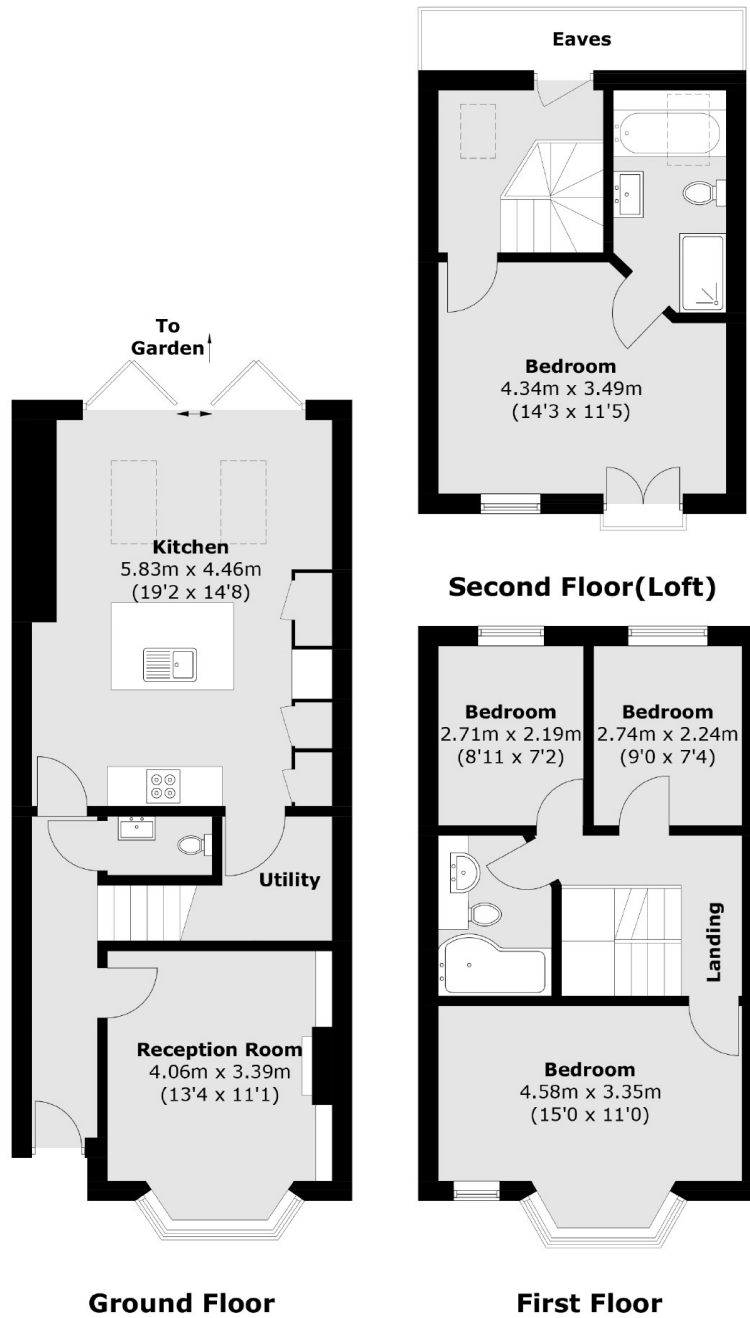
A stunning example of a Victorian family home, that has been thoughtfully renovated to a great standard, in a popular Earlsfield location.

The property is mid terrace and has been extended into the loft and at the rear. Accommodation comprises; entrance hall with useful W/C, spacious and well presented reception room with feature fireplace, modern open plan kitchen/dining room; offering an excellent entertaining space, useful utility room with access to a cellar and bi-folding doors onto a large low maintenance private garden. On the first floor there is a modern family bathroom finished to an excellent standard and three bedrooms. Stairs lead to a landing space with access to eaves storage and the principle bedroom which boasts an en-suite bathroom with a separate shower and bath and a Juliet Balcony. The property benefits from an abundance of natural light throughout.

Located on a much sought after road in Earlsfield, the property is well placed for some of the most desirable schools in the area and is 0.3 miles from Earlsfield mainline station. Garratt Lane with its vast array of [shops, bars and restaurants](#) is within easy reach. The green open spaces of King George's Park is close by.







Total area (approx.): 117.9 sq. m (1,269.1 sq. ft)
(Excluding Eaves)

JACKSONS EARLSFIELD

372-374 Garratt Lane,
Earlsfield, London, SW18 4ES
Sales: 020 8971 7979
Lettings: 020 8971 7070

Energy Rating: We aim to make our particulars both accurate and reliable. However they are not guaranteed; nor do they form part of an offer or contract. If you require clarification on any points then please contact us, especially if you're traveling some distance to view. Please note that appliances and heating systems have not been tested and therefore no warranties can be given as to their good working order.