



PENWITH ROAD, SW18

£600,000

- Victorian Maisonette
- Two Bedrooms
- Ground Floor
- Private Garden
- Sought After Location
- Energy rating: C







## ABOUT THE HOME

A beautifully presented two bedroom ground floor Victorian conversion flat with a modern kitchen, bathroom and a well-presented private garden.

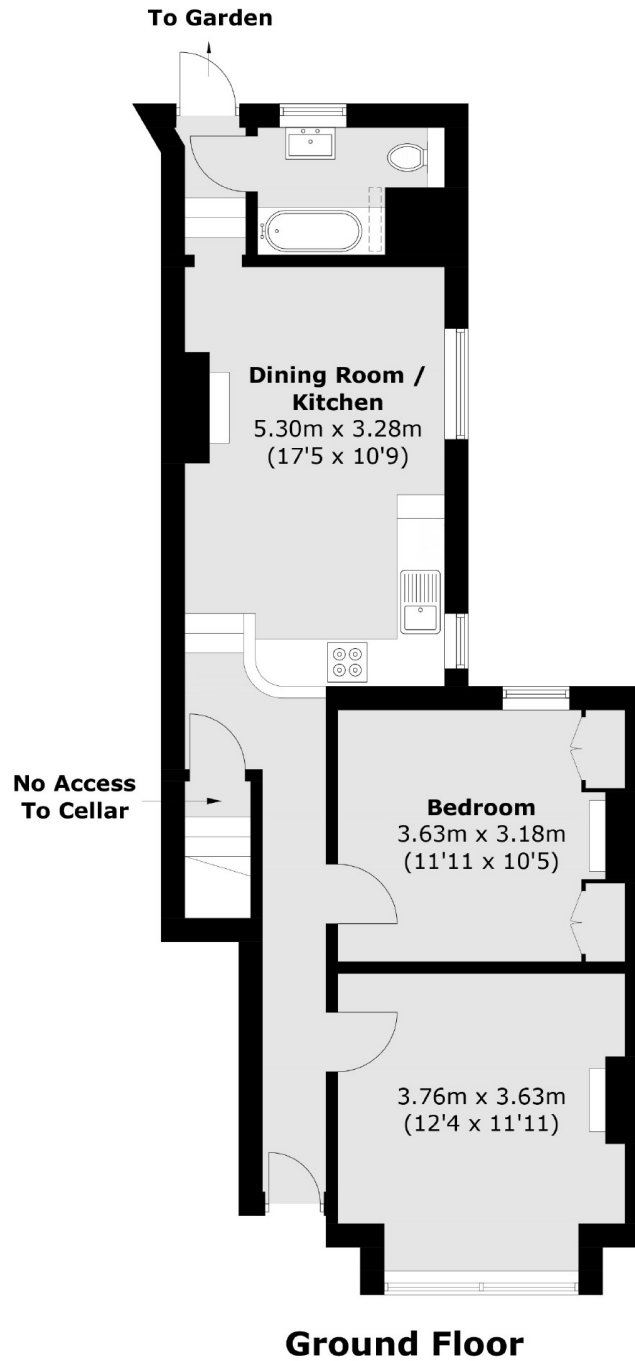
This ground floor maisonette is in a prime location in Earlsfield and is in excellent condition. It has a contemporary finish throughout whilst retaining a wealth of character and period features. Upon entrance there is a hallway with wooden flooring, leading into a spacious reception room benefiting from an abundance of light, a well presented double bedroom with built in storage, stylish and superbly presented refitted kitchen/dining room with doors leading to a modern bathroom and doors onto a low maintenance private garden.

The property is situated in a highly desirable residential road within close proximity of Earlsfield mainline station and Garratt Lane with its selection of shops, cafes, restaurants, pubs and wine bars.









Total area (approx.): 57.8 sq. m (622.1 sq. ft)

#### JACKSONS EARLSFIELD

372-374 Garratt Lane,  
Earlsfield, London, SW18 4ES  
Sales: 020 8971 7979  
Lettings: 020 8971 7070

Energy Rating: We aim to make our particulars both accurate and reliable. However they are not guaranteed; nor do they form part of an offer or contract. If you require clarification on any points then please contact us, especially if you're traveling some distance to view. Please note that appliances and heating systems have not been tested and therefore no warranties can be given as to their good working order.