



GODLEY ROAD, SW18

£600,000

- First Floor Maisonette
- Two Double Bedrooms
- Modern Fitted Kitchen
- Chain Free
- Large Private Garden
- Energy rating: E





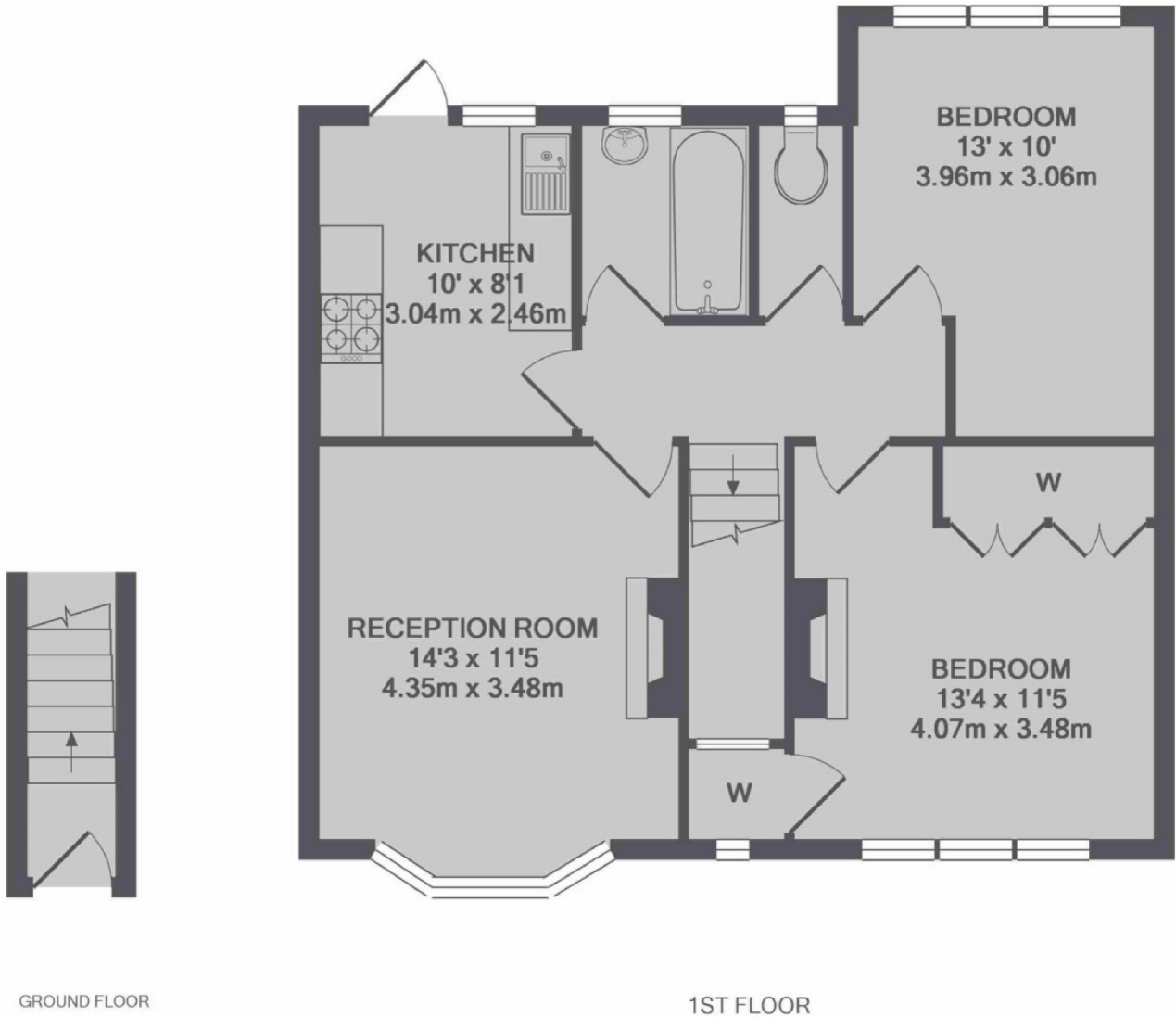
ABOUT THE HOME

A two double bedroom first floor maisonette with private rear garden. Including a modern fitted kitchen, double glazing throughout, ample storage, beautiful feature fireplace and landscaped garden with bar area. The property is being offered to the market chain free.

Located on the ever popular Godley Road which is within close proximity to Earlsfield Station as well as the open spaces of Wandsworth Common.







TOTAL APPROX. FLOOR AREA 688 SQ.FT. (63.9 SQ.M.)

JACKSONS EARLSFIELD

372-374 Garratt Lane,
Earlsfield, London, SW18 4ES
Sales: 020 8971 7979
Lettings: 020 8971 7070

Energy Rating: We aim to make our particulars both accurate and reliable. However they are not guaranteed; nor do they form part of an offer or contract. If you require clarification on any points then please contact us, especially if you're traveling some distance to view. Please note that appliances and heating systems have not been tested and therefore no warranties can be given as to their good working order.