



DURNSFORD ROAD, SW19

£400,000

- Two Double Bedrooms
- Private Balcony
- Secure Allocated Parking
- Communal Gardens
- Open Plan Living/Kitchen
- Energy rating: C





ABOUT THE HOME

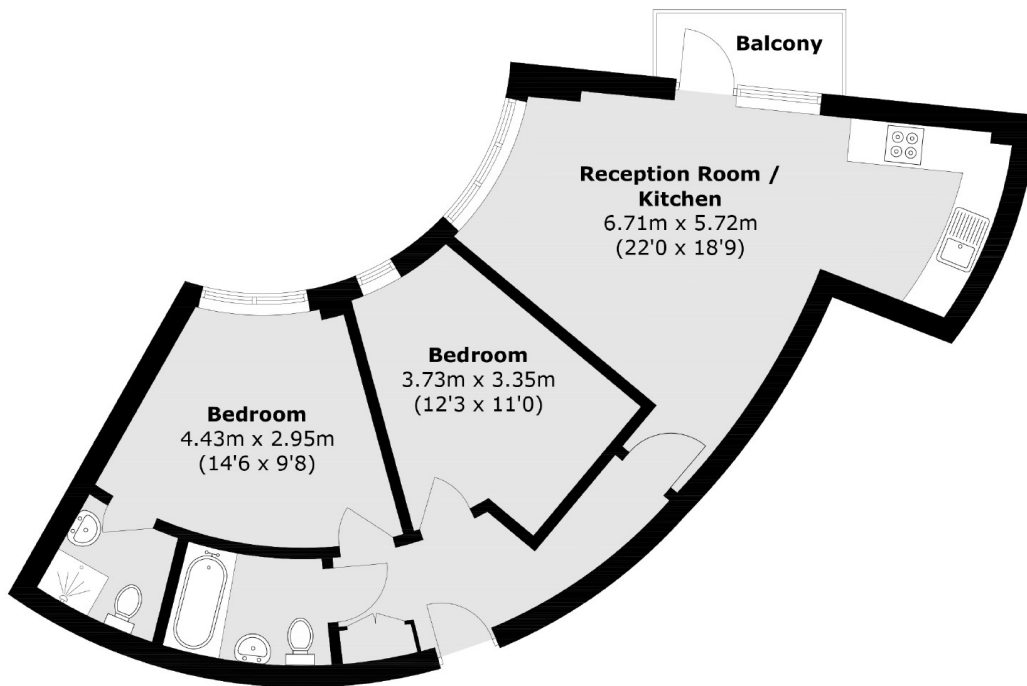
A well appointed two bedroom, two bathroom modern apartment being sold with allocated secure underground parking, benefits from a south facing balcony and access to well maintained communal gardens.

Accommodation comprises; secure entry system, hallway with useful storage cupboard, wonderfully presented reception room open plan to the dining area and modern kitchen with access onto a generous balcony; offering a fantastic entertaining area, modern family bathroom, generous second bedroom and master bedroom with en suite bathroom.

The property is situated in a highly sought after modern development, offering easy access to both Haydons Road mainline railway station (0.2 mile) or Wimbledon mainline station (1 mile). The green open spaces of Garfield Road Recreation Ground and Wandle Meadow Nature Park are also close by.







Second Floor

Total area (approx.): 57.0 sq. m (613.5 sq. ft)
Balcony: 2.6 sq. m (27.9 sq. ft)

JACKSONS EARLSFIELD

372-374 Garratt Lane,
Earlsfield, London, SW18 4ES
Sales: 020 8971 7979
Lettings: 020 8971 7070

Energy Rating: We aim to make our particulars both accurate and reliable. However they are not guaranteed; nor do they form part of an offer or contract. If you require clarification on any points then please contact us, especially if you're traveling some distance to view. Please note that appliances and heating systems have not been tested and therefore no warranties can be given as to their good working order.