



TRANMERE ROAD, SW18

£700,000

- Victorian Ground Floor Flat
- Share of Freehold
- Two Double Bedrooms
- Generous Private Garden
- Modern Bathroom
- Energy rating: TBC





ABOUT THE HOME

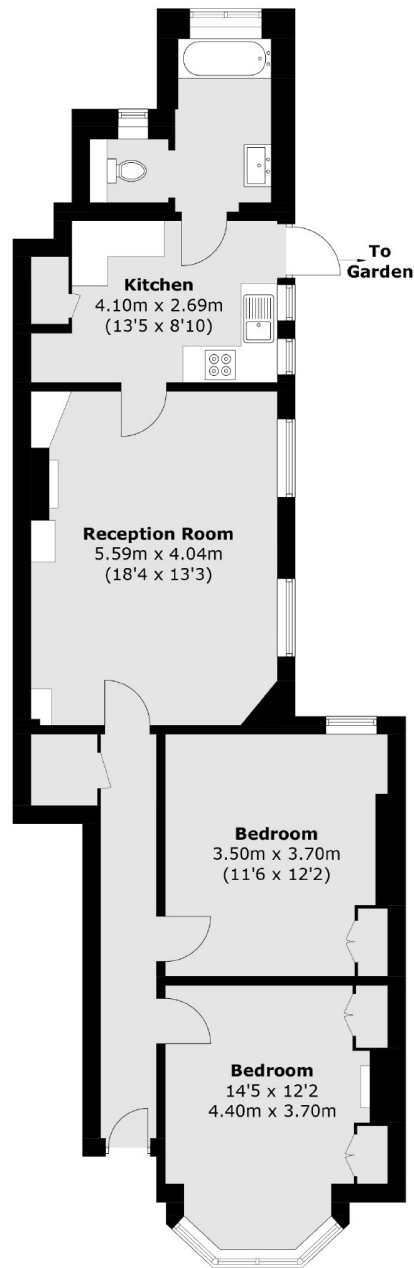
A two double bedroom, ground floor, Victorian maisonette with an abundance of period features and a private rear garden.

Entered via it's own front door this beautifully presented maisonette comprises; a generous hallway upon entrance featuring original floorboards which have been restored by the current owners, two genuine double bedrooms both benefitting from fitted wardrobes, a large reception/dining room with two feature fireplaces, a modern fitted kitchen, a recently renovated bathroom suite and a private rear garden. The property offers a Share of the Freehold.

Located on the sought after Tranmere Road within minutes of Earlsfield Station as well as the local amenities of Garratt Lane. The property is also in the catchment area for the renowned Earlsfield Primary school.







Total area (approx.): 80.7 sq. m (868.6 sq. ft)

JACKSONS EARLSFIELD

372-374 Garratt Lane,
Earlsfield, London, SW18 4ES
Sales: 020 8971 7979
Lettings: 020 8971 7070

Energy Rating: We aim to make our particulars both accurate and reliable. However they are not guaranteed; nor do they form part of an offer or contract. If you require clarification on any points then please contact us, especially if you're traveling some distance to view. Please note that appliances and heating systems have not been tested and therefore no warranties can be given as to their good working order.