



## PLOUGH LANE, SW17

£570,000

- Large Modern Apartment
- Impressive Balcony
- Two Bedrooms
- Excellent Condition
- Communal Gardens
- Energy rating: B





## ABOUT THE HOME

An impressively large two bedroom, two bathroom modern apartment with a spacious private balcony and a large communal roof terrace.

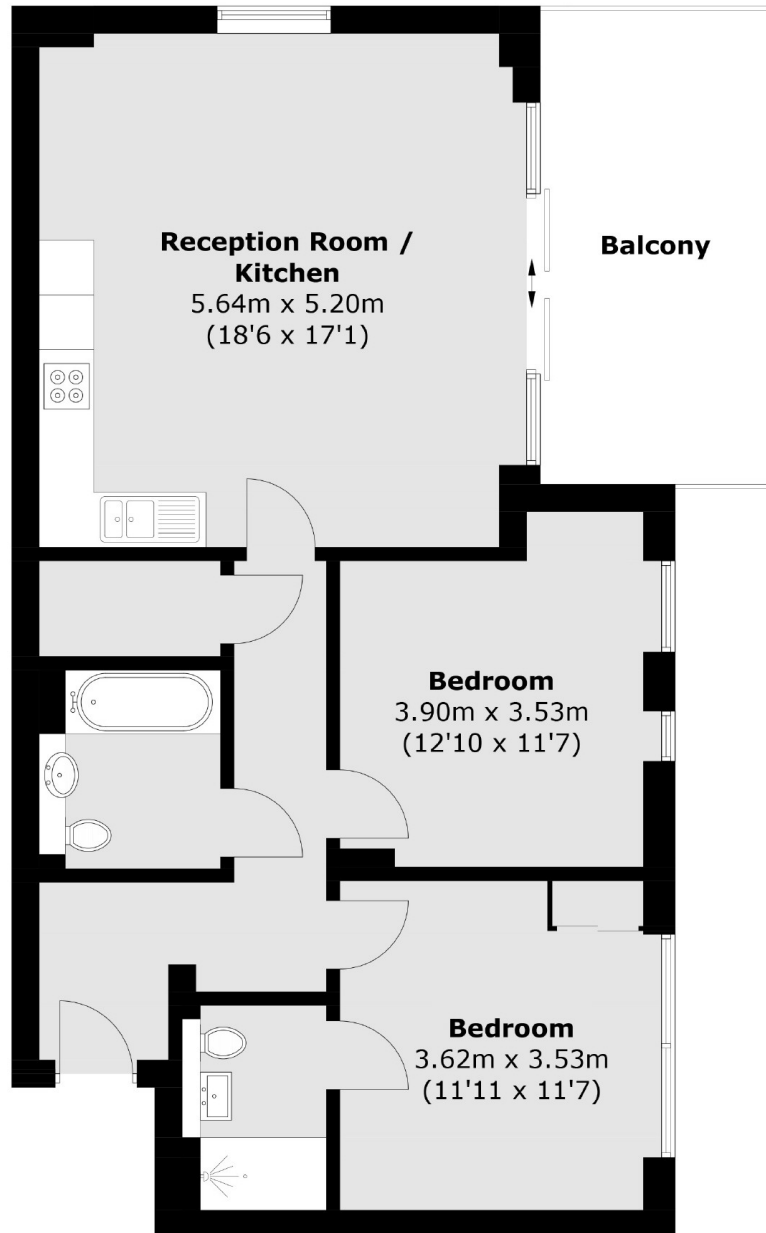
Accommodation comprises of a spacious hallway, beautifully presented modern kitchen/diner open plan to the generous reception room; offering a fantastic entertaining space with sliding doors onto a large private balcony, modern family bathroom, two genuine double bedrooms; main bedroom benefiting from a built-in wardrobe and en suite bathroom. There is a well kept communal roof terrace located on the same floor as the apartment. The development also offers a concierge service and wonderful on-site facilities.

Lister House is located within the much sought after Stadia 3 in the Wimbledon Grounds development and is 0.7 miles of Haydons Road mainline station and 0.8 mile of both Earlsfield mainline station and 1 mile to Tooting Broadway underground station. The local amenities including shops, bars, restaurants and the green open spaces of the Wandle Meadow Nature Park.









Total area (approx.): 76.9 sq. m (827.7 sq. ft)  
Balcony: 13.1 sq. m (141.0 sq. ft)

#### JACKSONS EARLSFIELD

372-374 Garratt Lane,  
Earlsfield, London, SW18 4ES  
Sales: 020 8971 7979  
Lettings: 020 8971 7070

Energy Rating: We aim to make our particulars both accurate and reliable. However they are not guaranteed; nor do they form part of an offer or contract. If you require clarification on any points then please contact us, especially if you're traveling some distance to view. Please note that appliances and heating systems have not been tested and therefore no warranties can be given as to their good working order.