



FURMAGE STREET, SW18

£950,000

- Victorian Family Home
- Three Double Bedrooms
- Open Plan Kitchen/Dining
- Air Conditioning Throughout
- Private Garden
- Energy rating: C





ABOUT THE HOME

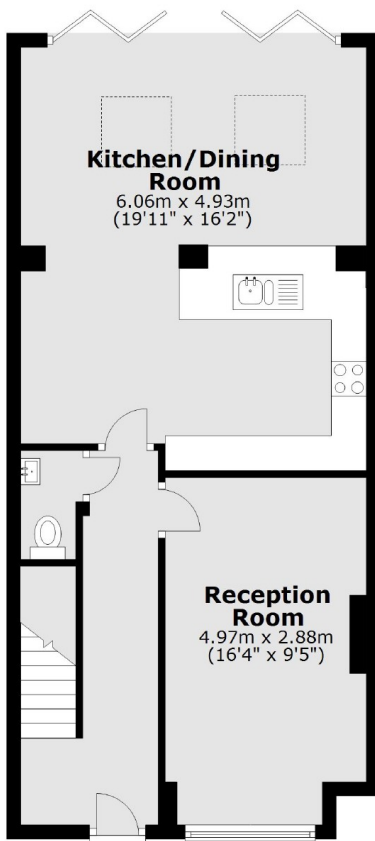
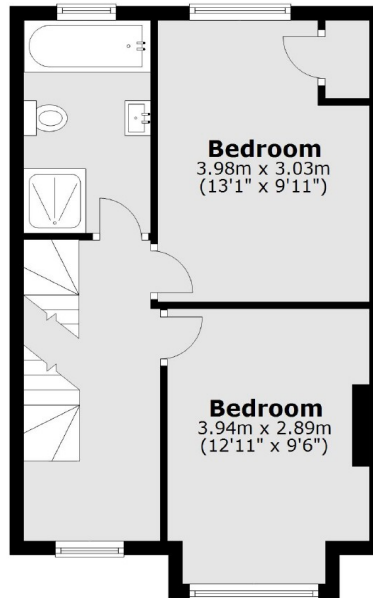
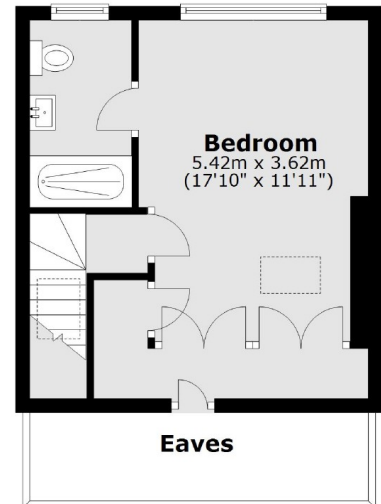
A three double bedroom Victorian house; thoughtfully extended into the loft and to the rear to create a wonderful family home.

Accommodation comprises; an entrance hall, beautifully presented reception room with feature fireplace, to the rear is a bright kitchen/dining room, open plan to a second reception area; bi-folding doors lead to a rear secluded garden. There is a W/C on the ground floor. On the first floor there are two well-proportioned double bedrooms, a generous family bathroom and an extremely useful built-in study/home office on the first floor landing. Stairs lead to the second floor where you'll find a third large bedroom, an en suite bathroom and bespoke fitted wardrobes leading to additional eaves storage. This beautiful family home has also been fitted with air conditioning throughout.

Located on a much sought after road in Earlsfield, this property is well placed for some of the most desirable schools in the area and is 0.6 miles from Earlsfield mainline station. Garratt Lane with its vast array of shops, bars and restaurants is within easy reach, as well as the green open spaces of King George's Park.





Ground Floor**First Floor****Second Floor**

Total area: approx. 119.1 sq. metres (1282.3 sq. feet)

JACKSONS EARLSFIELD

372-374 Garratt Lane,
Earlsfield, London, SW18 4ES
Sales: 020 8971 7979
Lettings: 020 8971 7070

Energy Rating: We aim to make our particulars both accurate and reliable. However they are not guaranteed; nor do they form part of an offer or contract. If you require clarification on any points then please contact us, especially if you're traveling some distance to view. Please note that appliances and heating systems have not been tested and therefore no warranties can be given as to their good working order.