



TRINITY ROAD, SW18

£2,850 PCM

- First Floor Conversion
- Period Features
- Open Plan Living Space
- Three Double Bedroom
- Modern Bathroom Suite
- Close to Wandsworth Common





ABOUT THE HOME

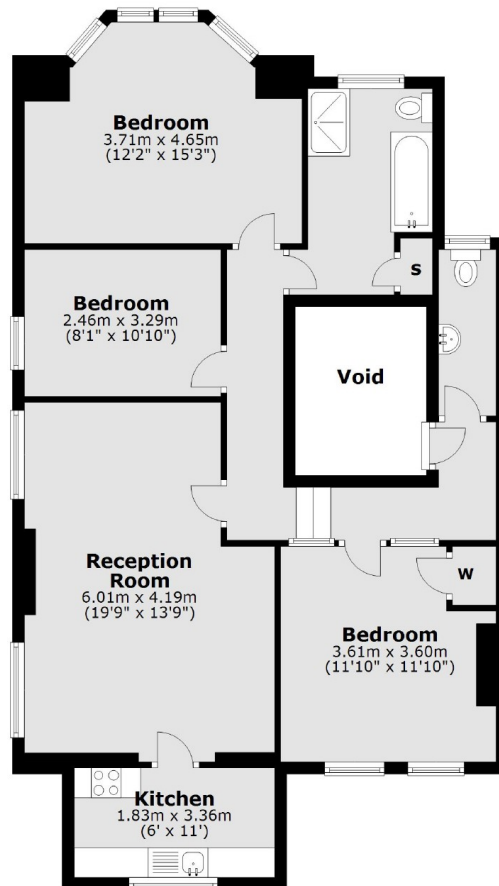
A spacious three double bedroom first floor conversion boasting period features throughout.

Including an large open plan living space with room for dining and modern fitted kitchen, three genuine double bedrooms and a modern bathroom suite.

Well located within walking distance of Wandsworth Common and the popular shops and restaurants of Bellevue Road





First Floor

Total area: approx. 87.6 sq. metres (943.3 sq. feet)

JACKSONS EARLSFIELD

372-374 Garratt Lane,
Earlsfield, London, SW18 4ES
Sales: 020 8971 7979
Lettings: 020 8971 7070

Energy Rating: We aim to make our particulars both accurate and reliable. However they are not guaranteed; nor do they form part of an offer or contract. If you require clarification on any points then please contact us, especially if you're traveling some distance to view. Please note that appliances and heating systems have not been tested and therefore no warranties can be given as to their good working order.