



## KEBLE STREET, SW17

£875,000

- Victorian Family Home
- Three Double Bedrooms
- Large Private Garden
- Outbuilding/Gym/Office
- Excellent Condition
- Energy rating: D







## ABOUT THE HOME

A beautiful example of a three double bedroom Victorian family home benefiting from an impressive garden and outbuilding.

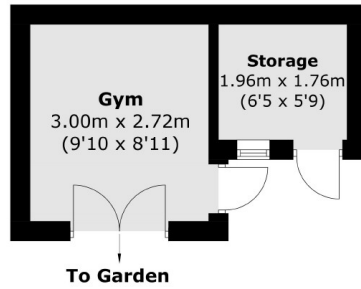
Accommodation comprises; a generous entrance hall, beautifully presented reception room, to the rear is a bright kitchen/dining room which leads onto a large secluded garden with an outbuilding; currently utilised as a gym and a storage shed. The property also benefits from a useful utility room on the ground floor. On the first floor there are two well-proportioned bedrooms and a luxurious bathroom. Stairs lead to the second floor where you'll find a third large bedroom with an en suite shower room and ample storage space. The property has been decorated to a high standard throughout and has been extended into the loft offering scope to extend on the ground floor (subject to planning permission) to create a fantastic family home.

This property is situated in a highly desirable residential street with easy access to both Earlsfield mainline railway station and Tooting Broadway underground station. A plethora of restaurants, bars, leisure facilities are also within walking distance.

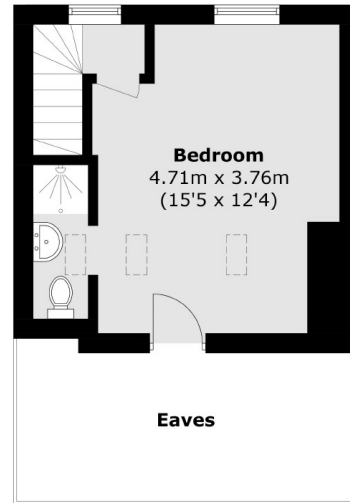




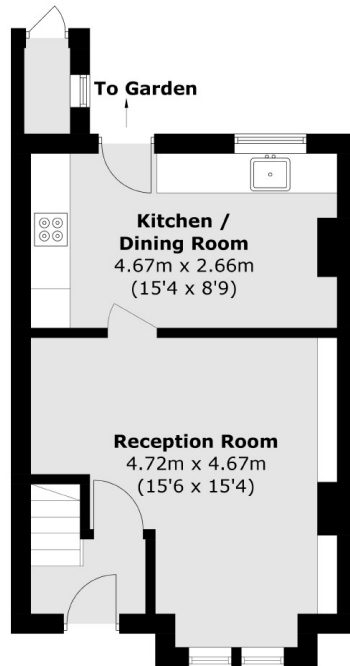




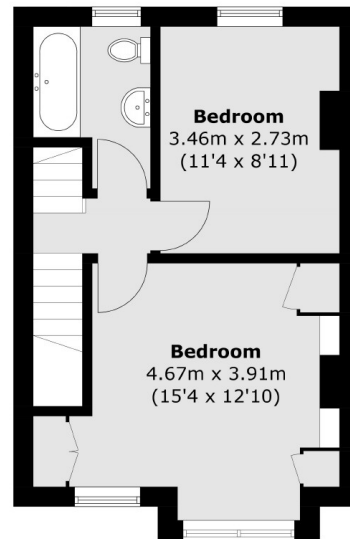
(Not Shown In Actual  
Location / Orientation)



**Second Floor**



**Ground Floor**



**First Floor**

Total area (approx.): 89.6 sq. m ( 964.3 sq. ft)  
 External Store: 1.0 sq. m ( 10.7 sq. ft)  
 Outbuilding: 12.3 sq. m ( 132.3 sq. ft)  
 (Excluding Eaves)

**JACKSONS EARLSFIELD**

372-374 Garratt Lane,  
 Earlsfield, London, SW18 4ES  
 Sales: 020 8971 7979  
 Lettings: 020 8971 7070

Energy Rating: We aim to make our particulars both accurate and reliable. However they are not guaranteed; nor do they form part of an offer or contract. If you require clarification on any points then please contact us, especially if you're traveling some distance to view. Please note that appliances and heating systems have not been tested and therefore no warranties can be given as to their good working order.