



## Greyhound Parade, SW17

£650,000

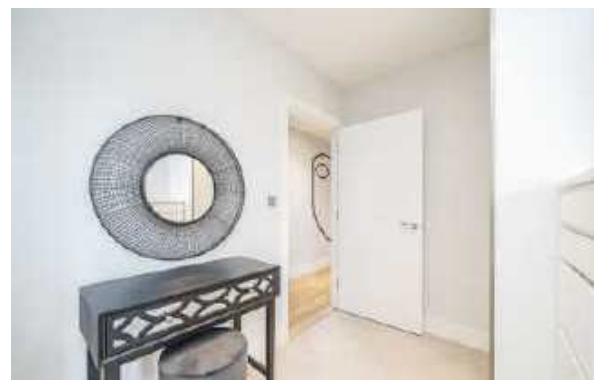
An impressively large two bedroom, two bathroom modern apartment with large terrace.

- Large Modern Apartment
- Impressive Terrace
- Two Bedrooms
- Two Bathrooms
- Excellent Condition
- Communal Gardens



Accommodation comprises of a spacious hallway with useful storage cupboard, beautifully presented modern kitchen diner open plan to the generous reception; offering a fantastic entertaining space and with sliding doors onto a private terrace with access into the well presented and secure communal gardens, modern family bathroom, two genuine double bedrooms; main bedroom benefiting from a built-in wardrobe and en suite bathroom. The development also offers a concierge service and wonderful on-site facilities.

Millwards Court is located within the much sought after Stadia One development and is 0.7 miles of Haydons Road mainline station and 0.8 mile of both Earlsfield mainline station and 1 mile to Tooting Broadway underground station. The local amenities including shops, bars, restaurants and the green open spaces of the Wandle Meadow Nature Park.









### Ground Floor

Total area (approx.): 84.90 sq. m (914 Sq. ft)

Jacksons Earlsfield  
372-374 Garratt Lane  
Earlsfield  
London  
SW18 4ES  
020 8971 7979

Energy Rating: We aim to make our particulars both accurate and reliable. However they are not guaranteed; nor do they form part of an offer or contract. If you require clarification on any points then please contact us, especially if you're traveling some distance to view. Please note that appliances and heating systems have not been tested and therefore no warranties can be given as to their good working order.