



STRATHVILLE ROAD, SW18

£4,250 PCM

- Terraced House
- Private Rear Garden
- Four Double Bedrooms
- Part-Furnished





ABOUT THE HOME

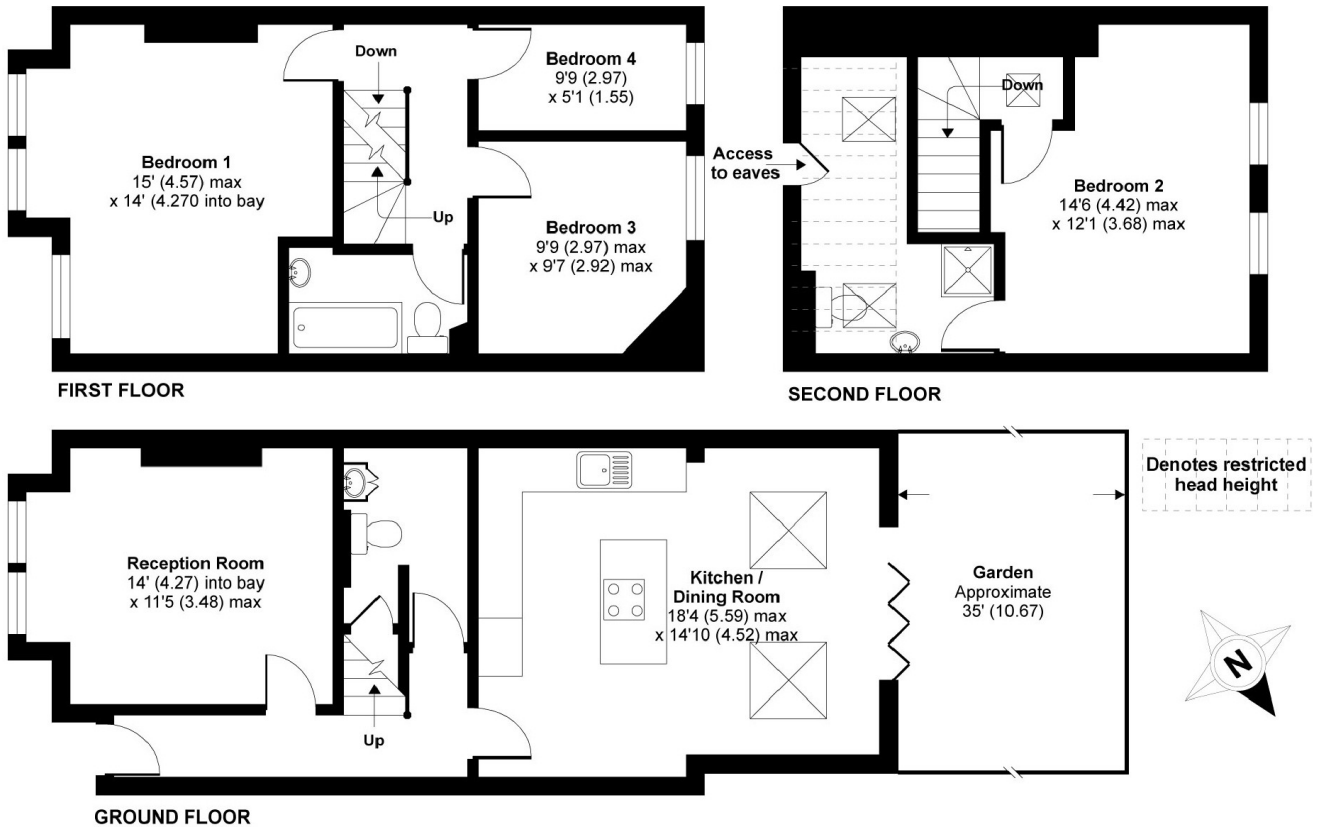
A four bedroom mid terrace Victorian house with private rear garden, including an impressive kitchen/dining room, two bathrooms and an additional WC.

Further benefits include underfloor heating in the kitchen, ample storage, gas central heating and on street parking.

The property situated within close proximity to Earlsfield Rail station, local amenities and Schools.







APPROX. GROSS INTERNAL FLOOR AREA 1221 SQ FT 113.4 SQ METRES (EXCLUDES RESTRICTED HEAD HEIGHT)

Strathville Road, Earlsfield, SW18

Copyright nichecom.co.uk 2017 Produced for Jacksons the Independent Estate Agents REF : 193027

JACKSONS EARLSFIELD

372-374 Garratt Lane,
 Earlsfield, London, SW18 4ES
 Sales: 020 8971 7979
 Lettings: 020 8971 7070

Energy Rating: C We aim to make our particulars both accurate and reliable. However they are not guaranteed; nor do they form part of an offer or contract. If you require clarification on any points then please contact us, especially if you're traveling some distance to view. Please note that appliances and heating systems have not been tested and therefore no warranties can be given as to their good working order.