



MARCUS STREET, SW18

£550,000

- Two Double Bedrooms
- Victorian Apartment
- Two Bathrooms
- Excellent Condition
- Sought After Location
- Energy rating: B





ABOUT THE HOME

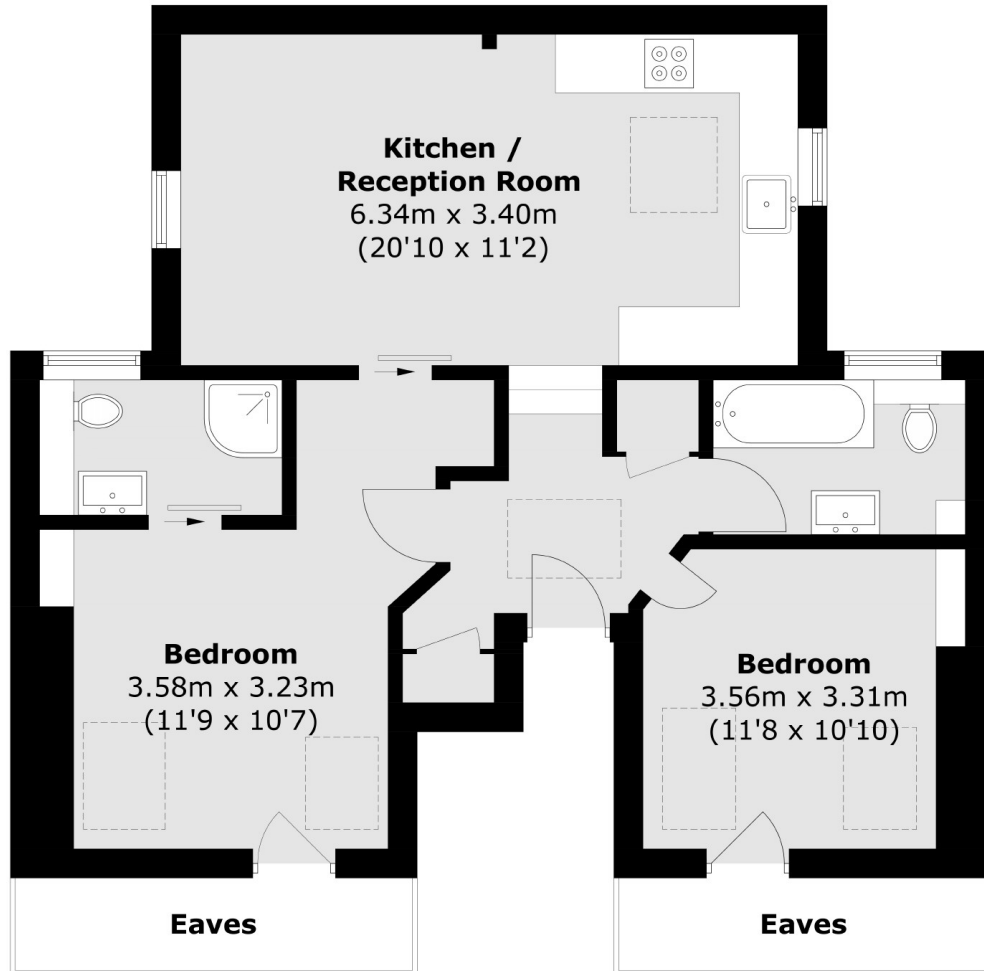
An exceptional two double bedroom, two bathroom Victorian conversion in a desirable Wandsworth location.

The apartment is in excellent condition with a modern finish throughout. Accommodation comprises; a large beautifully presented kitchen/reception room, generous double bedroom with an en-suite, second bedroom, modern bathroom; all of which offers a wonderful entertaining space and benefits from an abundance of natural light. The property further benefits from a 10 year new build guarantee.

Marcus Street is part of a grid of quiet residential roads of similar Victorian purpose built apartments, which are consistently sought after being within close proximity of Wandsworth Town. This location is very well served by excellent transport links, restaurants, bars, leisure and shopping facilities. The green open spaces of Wandsworth Common and King George's Park are also close by.







Total area (approx.): 63.4 sq. m (682.4 sq. ft)
(Excluding Eaves)

JACKSONS EARLSFIELD

372-374 Garratt Lane,
Earlsfield, London, SW18 4ES
Sales: 020 8971 7979
Lettings: 020 8971 7070

Energy Rating: We aim to make our particulars both accurate and reliable. However they are not guaranteed; nor do they form part of an offer or contract. If you require clarification on any points then please contact us, especially if you're traveling some distance to view. Please note that appliances and heating systems have not been tested and therefore no warranties can be given as to their good working order.